

Water Losses

Presented by:

Migemi Abraham

Director of Water Resources Dep.

For:

NAIROBI UNITED NATION WORKSHOP

December 2006

Mass Balance

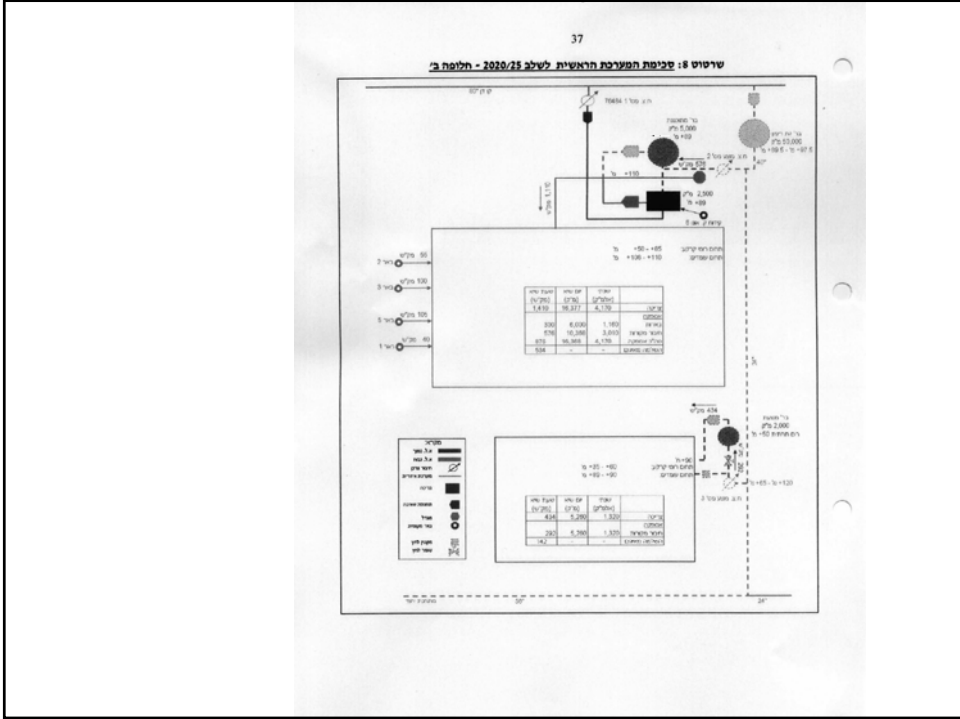
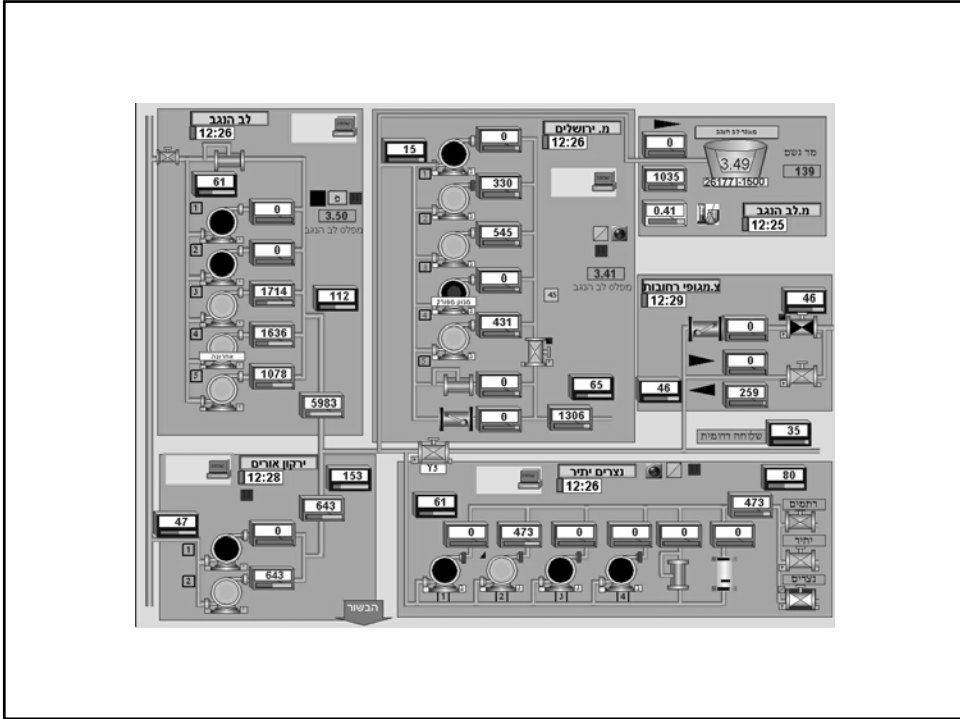
Input

- Receiving water from neighbor nets/ suppliers.
- Local water resources.

Output

- Selling water to internal customers.
- Transferring water to external nets/ customers. -

$$\text{Input} - \text{Output} = \text{Storage} + \text{Water loss}$$



Disadvantages

- Economic significance.
- Waste of limited resource.
- Credibility of water supply system.
- Water quality risks.



Engineering

- Materials - selection.
- Metering – modeling -
 - Total measurement -
 - Close circuit -
- Pressure – regulating -
 - Less is better -



Engineering steps

General planning.

Detailed planning.

Implementation.

Maintenance.

Software - Modeling.



Engineering steps

Software - Modeling.

Scada – Supervisory control and
Data Acquisition

A.M.R. – Automatic Meter
Reading



Thank you