



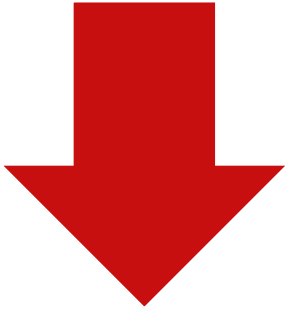
Germany's Experiences and Policy Measures to address COVID-19 impacts on sustainable transport

Daniel Bongardt - UN DESA Webinar 24th June 2020

giz

Deutsche Gesellschaft
für Internationale
Zusammenarbeit (GIZ) GmbH

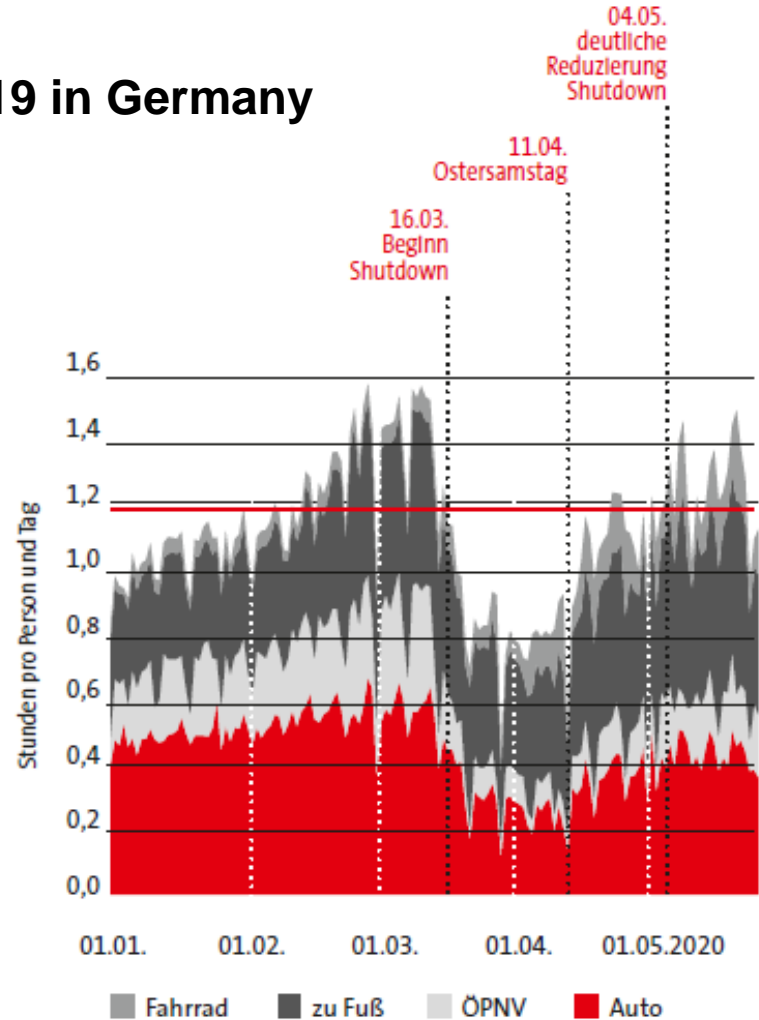
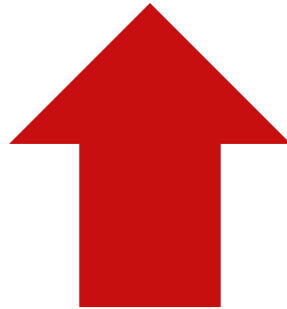
Transport and travel impacts of COVID-19 in Germany



- Traffic levels
- Air pollution, noise
- public transport demand
- public transport revenue



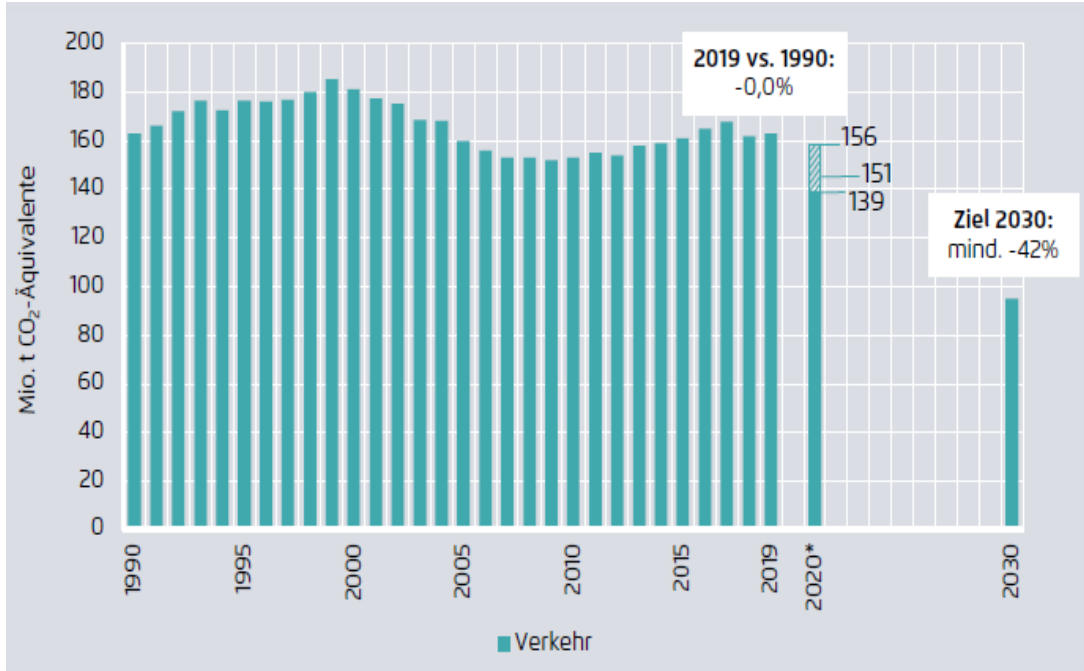
- walking and cycling
- Short car trips



https://www.bmbf.de/files/infas_Mobilit%C3%A4tsreport_20200610.pdf

Transport GHG emissions expected to fall in 2020 – Good news?

Transport CO₂e trend and 2030 goal in Germany

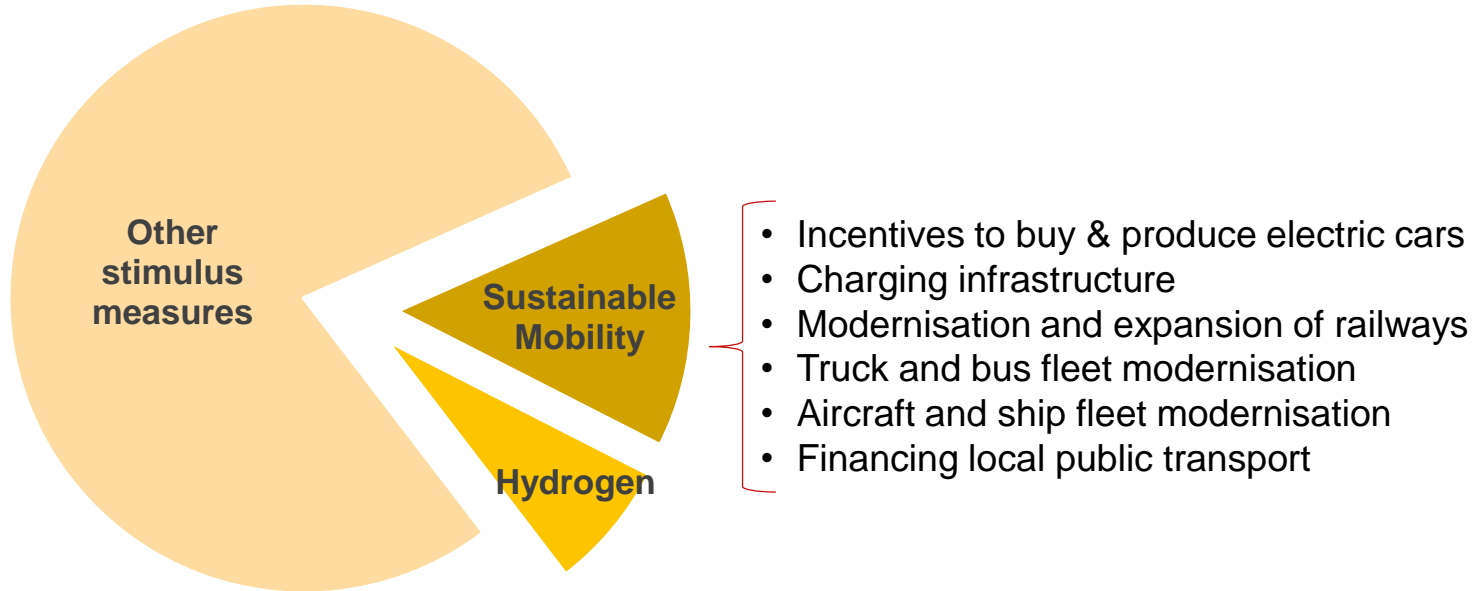


- Minus 7-25 MtCO₂ in 2020 (4-16%)
- To avoid rebound and to yield further mitigation, sustainable transport investments must continue and be upscaled
- Economic stimulus programmes must promote a 'green recovery'

https://www.agora-energiewende.de/fileadmin2/Projekte/2020/ohne_Projekt/2020-03_Corona_Krise/178_A-EW_Corona-Drop_WEB.pdf

WUMMS!

Germany's €130 billion COVID-19 recovery programme

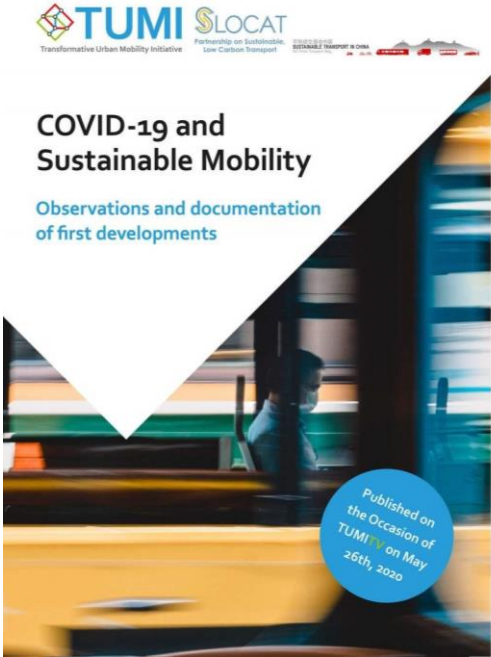


- ~50 measures to boost consumption and speed-up recovery, equivalent to 4% of GDP
- >€50 billion (42%) for a „future package“ on climate mitigation, digitisation etc.
- of which ~€20 billion for transport decarbonisation measures

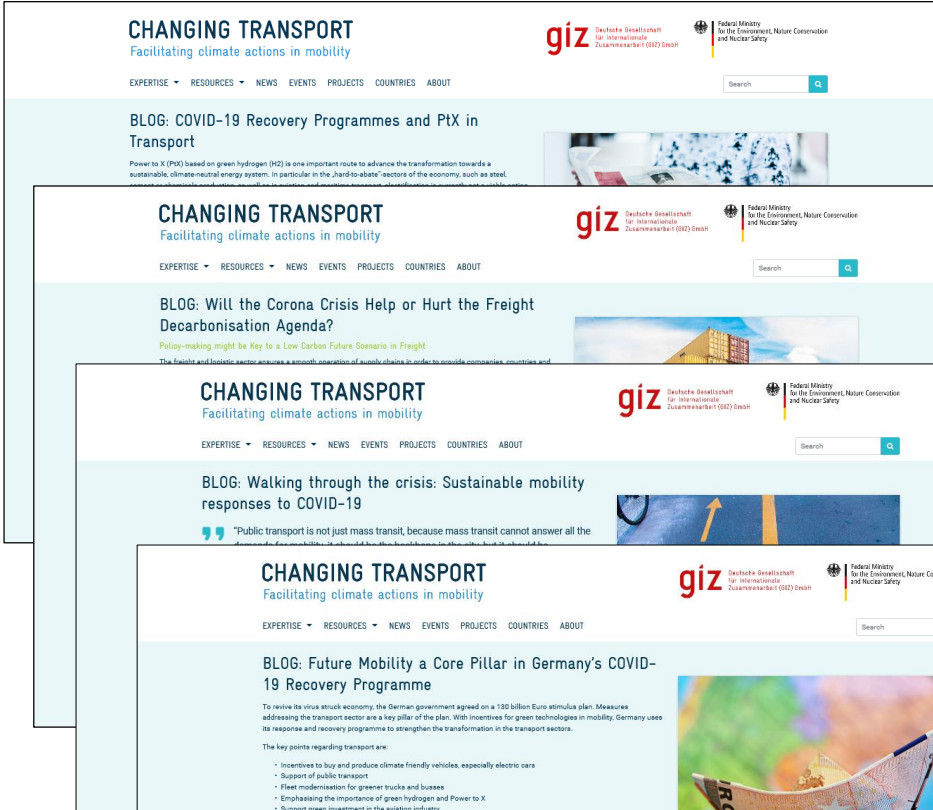
Sharing knowhow and ideas to shape the green recovery agenda

TUMI Corona Transport Knowledge Platform

<https://www.transformative-mobility.org/corona>



BLOGs on www.changingtransport.org



THANK YOU