



SEA ~ AES

ARCTIC EIDER SOCIETY • SOCIÉTÉ DES EIDERS DE L'ARCTIQUE

WWW.ARCTICEIDER.COM



Hudson Bay
Watershed

www.peopleofafeather.com

"Lyrical... Stunning"
The New York Times

"Georgeous... Genius... Great Filmmaking"
★★★★★ NOW Toronto

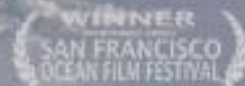
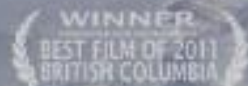


PEOPLE OF A FEATHER

Δ ο Δ^c Γ Π ε Λ Γ Δ

A FILM ABOUT SURVIVAL IN A CHANGING CANADIAN ARCTIC

SAMUEL SAO, WINNING DIRECTOR, PRESENTS AN INTERNATIONAL YEAR CANADA PRODUCTION WITH THE HISTORICAL PRODUCTION ARTS IN PARTNERSHIP WITH THE COMMUNITY OF SAMUEL SAO
PRODUCED BY JOHNNY KOLARICK AND SIMON LAURE, EDITOR: SIMON LAURE, EXECUTIVE PRODUCERS: SIMON LAURE AND SAMUEL SAO, DIRECTOR OF PHOTOGRAPHY: SIMON LAURE, EXECUTIVE PRODUCERS: SIMON LAURE AND SAMUEL SAO, EXECUTIVE PRODUCERS: SIMON LAURE AND SAMUEL SAO, EXECUTIVE PRODUCERS: SIMON LAURE AND SAMUEL SAO, EXECUTIVE PRODUCERS: SIMON LAURE AND SAMUEL SAO



Interconnected challenges... meet Inuit ingenuity

SOCIAL AND ECONOMIC INEQUITY IN INUIT NUNANGAT

Many Inuit face social and economic inequities that impact our health and wellbeing

Inuit Nunangat

52% of Inuit in Inuit Nunangat live in crowded homes*¹



34% of Inuit aged 25 to 64 in Inuit Nunangat have earned a high school diploma¹



70% of Inuit households in Nunavut are food insecure²



\$23,485 The median before tax individual income for Inuit in Inuit Nunangat¹



30 The number of physicians per 100,000 population in Nunavut⁴



47.5% of Inuit in Inuit Nunangat are employed¹



72.4 years The projected life expectancy for Inuit in Canada⁵



12.3 The infant mortality rate per 1,000 for Inuit infants in Canada.⁶

IMR

All Canadians

9% of all Canadians live in crowded homes*¹

86% of all Canadians aged 25 to 64 have earned a high school diploma¹

8% of all households in Canada are food insecure³

\$92,011 The median before tax individual income for non-Indigenous people in Inuit Nunangat¹

119 The number of physicians per 100,000 population in Urban Health Authorities⁴

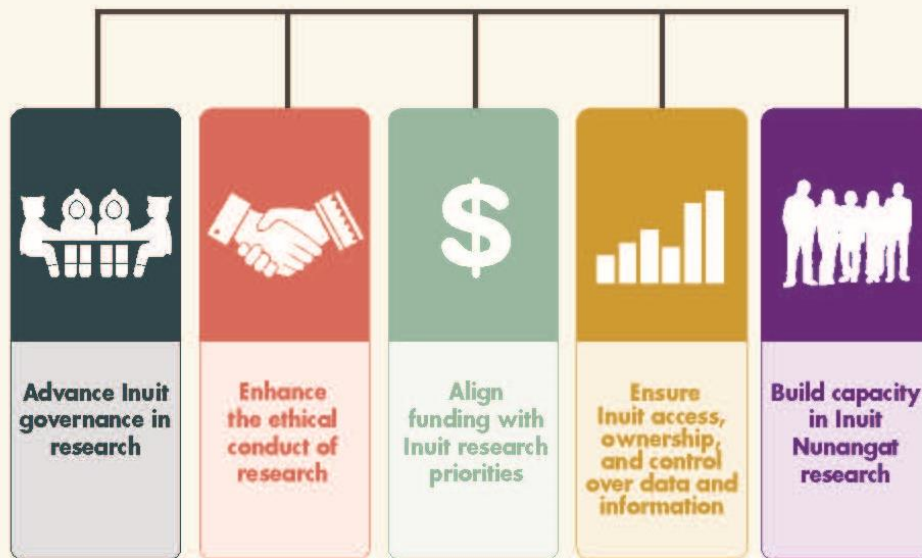
60.2% of all Canadians are employed¹

82.9 years The projected life expectancy for non-Indigenous people in Canada⁵

4.4 The non-indigenous infant mortality rate per 1,000 for Canada.⁶

RESPECTFUL AND BENEFICIAL RESEARCH FOR ALL INUIT

5 Priority Areas of National Inuit Strategy on Research



The 3 pillars of the Arctic Eider Society



1. Research

Enhance capacity for self-determination and the role of Indigenous knowledge in research by and for Arctic communities



The 3 pillars of the Arctic Eider Society



2. Education

Create culturally-relevant experiential curricula rooted in Inuit knowledge to engage youth in Arctic Science.



The 3 pillars of the Arctic Eider Society



3. Stewardship

Advance environmental and cultural stewardship, towards sustainability of healthy communities and ecosystems



Profiles & Organizations



SIKU About Tour Traditional Knowledge Education Research Stewardship Donate

Search SIKU

Arctic Eider Society

Map Message Share Join Manage

Feed Info Reports Photos

Filtered Social Report Deployments

Johnny Kudluarok shared a post
February 27th 2018 at 1:46pm
Looks like nuasannak area ice beginning to go out of amagutluk sound

Josie Amitook, Lucasee Arragutainaq and Johnny Kudluarok conducted a NCP Wildlife Sample of a Ringed Seal near Sanikiluaq
February 26th 2018 at 10:12 am

Arctic Eider Society shared Press Coverage from Canadian Geographic
February 25th 2018 at 9:29 pm
Inuit hunters and scientists are collaborating to record recent alarming shifts in Hudson Bay sea ice.

Reports & Blogs



Wildlife & Hunting



Ice & Weather



Research & Tools



Education & Stewardship



ᓂᓄ



SIKU

The Inuit Knowledge Wiki & Social Mapping Platform



WINNER OF THE GOOGLE.ORG IMPACT CHALLENGE

LEARN MORE >>

Search SIKU...

[Social](#) |
 [Wildlife](#) |
 [Sea Ice](#) |
 [Tool](#) |
 [Report](#)

[Feed](#)
 FILTER: [Status](#) | [News](#) | [Deployments](#)

Melissa Lavoie added a comment
May 24th 2018 at 6:07pm

Sammie Hunter shared a Posts
May 16th 2018 at 5:58pm

Polar Bear trip

At the mouth of the Winisk river with visitors from Australia

2 comments | Share | 2 likes

Michelle Kamula deployed a Ice Core Sample near Naujaat.
May 10th 2018 at 3:59pm | Show on Map

[Sidebar](#) |
 [Legend](#)

MAP LAYER:
 Sentinel 2
 MODIS
 Sentinel 1
 Sentinel 2
 Landsat 8
 Google
 Map

Hudson Bay

Map data ©2018 Google | Terms of Use | Report a map error

Post Community Home More

Sanikiluaq

2 °C NE 44 km/h
 Mostly Cloudy

Community Marine Ice

WIND
 44 km/h

TIDES
 RENOUF ISLAND

2m
1.5m
1m
0.5m
0m
 8:39 13:03 19:04 1:04

FORECAST
 BELCHER - SOUTHERN HALF

Warning - Issued 05:00 AM CST 21 November 2017
 Forecasts have ended for the season.

Jack Iqaluk and Lucassie Ippak shared a hunting story of a Polar Bear near Sanikiluaq.
 March 20th 2018 at 4:27pm [Show on Map](#)



Sidebar Legend

MAP LAYER
 Google
 +2018-05-23

- MODIS
- Sentinel 1
- Sentinel 2
- Landsat 8
- Google
- Map

SANIKILUAQ

Google

Imagery ©2018 DigitalGlobe | Terms of Use | Report a map error

Search SIKU...

Puasi Ippak

Message Map Edit

Feed About Photos

Accomplishments

- 15
- 1
- 4
- 0
- 0

FILTER

- Status
- News
- Deployments

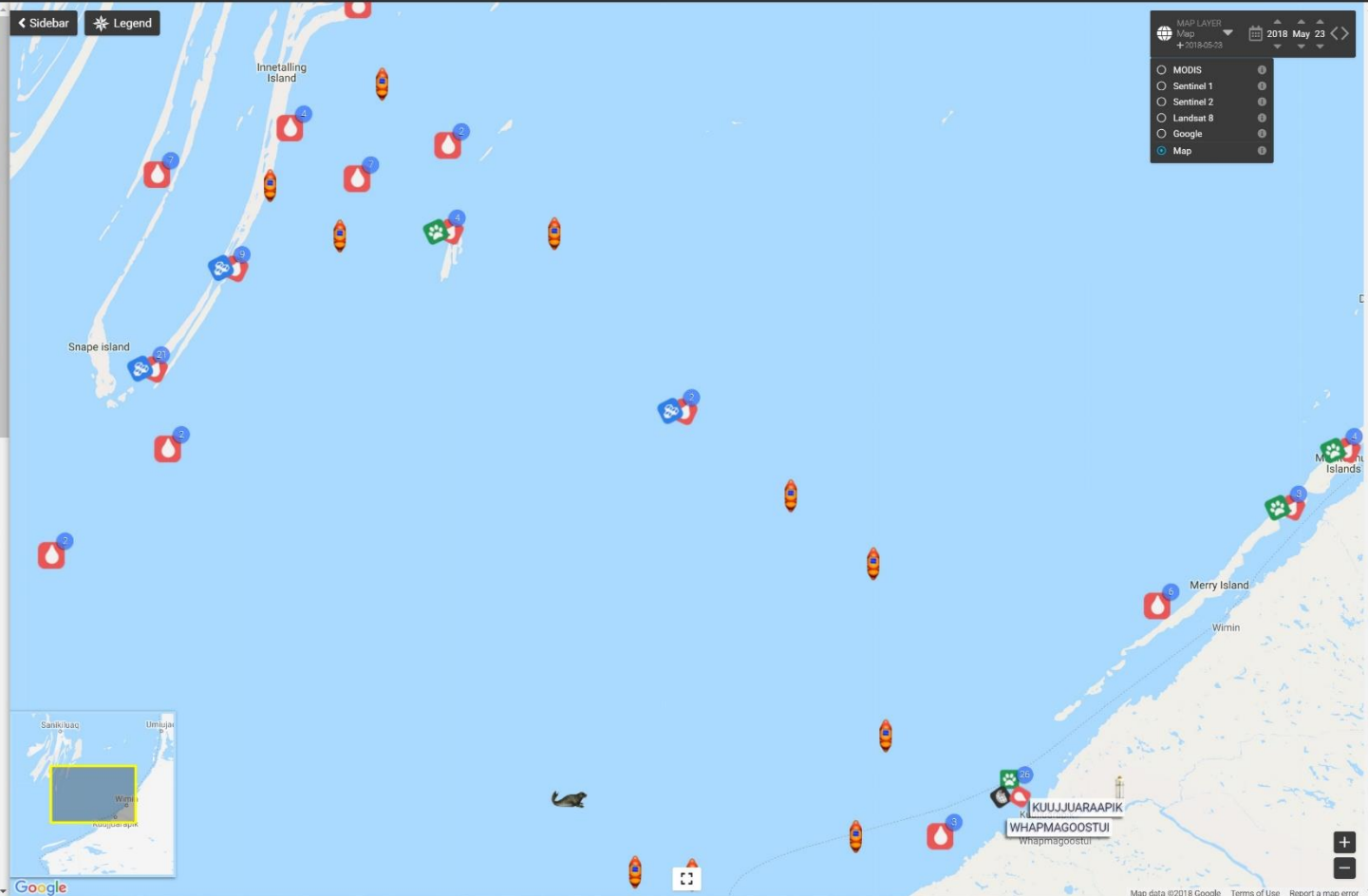
Joel Heath, Jens Ehn, Chris Peck and Puasi Ippak deployed a CTD Castaway near Sanikiluaq. March 14th 2018 at 5:35pm

With Arctic Eider Society Centre for Earth Observation Science, University of Manitoba East Hudson Bay/James Bay Community-Driven Research Network

Joel Heath, Jens Ehn, Chris Peck and Puasi Ippak deployed a CTD Castaway near Sanikiluaq. March 14th 2018 at 4:31pm

With Arctic Eider Society Centre for Earth Observation Science, University of Manitoba East Hudson Bay/James Bay Community-Driven Research Network

Joel Heath, Jens Ehn, Chris Peck and Puasi Ippak observed Ice & Snow Tickness near Sanikiluaq. March 14th 2018 at 4:07pm



Filter ▼

Arctic Cod	Arctic Fox	Beluga Whale
Blue Mussel	Bowhead Whale	Capelin
Common Eider	Copepod	Eelgrass
Green Urchin	Herring Gull	Jellyfish



Filter ▼







Quick Post



Ringed Seal Diet



Seal Sank



Polar Bear Diet

Categories



Wildlife



Sea Ice



Tools

 Post Defaults

Set your community, hunting partners, organizations, projects defaults before you go to speed up post creation on the ice. You can always change your defaults later.



Create observation deployment:



Common Eider



Ringed Seal



Blue Mussel



Sculpin



Walrus



Eelgrass



Phytoplankton



Arctic Cod



Snowy Owl



Beluga Whale



Polar Bear



Green Urchin





Create observation deployment:



Add Site Data



Take Photos



Add Measurements



Add Animal Info

REVIEW AND FINISH





Create ncp deployment:

Select a Community:



Inukjuak
Inukjuak



Chisasibi
Chisasibi



Sanikiluaq
Sanikiluaq



Kuujjuaraapik
Kuujjuaraapik



Umiujaq
Umiujaq

CANCEL

ADD CONTRIBUTORS



Create observation deployment:

[SET LOCATION](#)

Contributors



[ADD CONTRIBUTORS](#)

Date & Time *

[SET CURRENT TIME](#)

Coordinates *

[SET CURRENT GPS](#)

Description



Add Animal Information:

Animal Photo



Photo caption...

Sex

Unknown

Female

Male

Age

Unknown

Juvenile

Adult

Old

Body/Fat Condition

Average

Skinny

Fat



Photo caption...

Skin Condition

Description the skin condition of the animal...



Project Team



Joel Heath
Project Lead



Evan Warner
Interactive Design



Misha Warbanski
Research/Admin



Lucassie
Arragutainaq
Inuit Knowledge



Kristen Kownak
*Nunavut Sivuniksavut
Liaison*



Pauloosie
Kasudluak
Nunavik Liaison



Johnny Kudluarok
*Community
Research Liaison*



Gita Ljubicic
*Ice Terminology/
Participatory Maps*



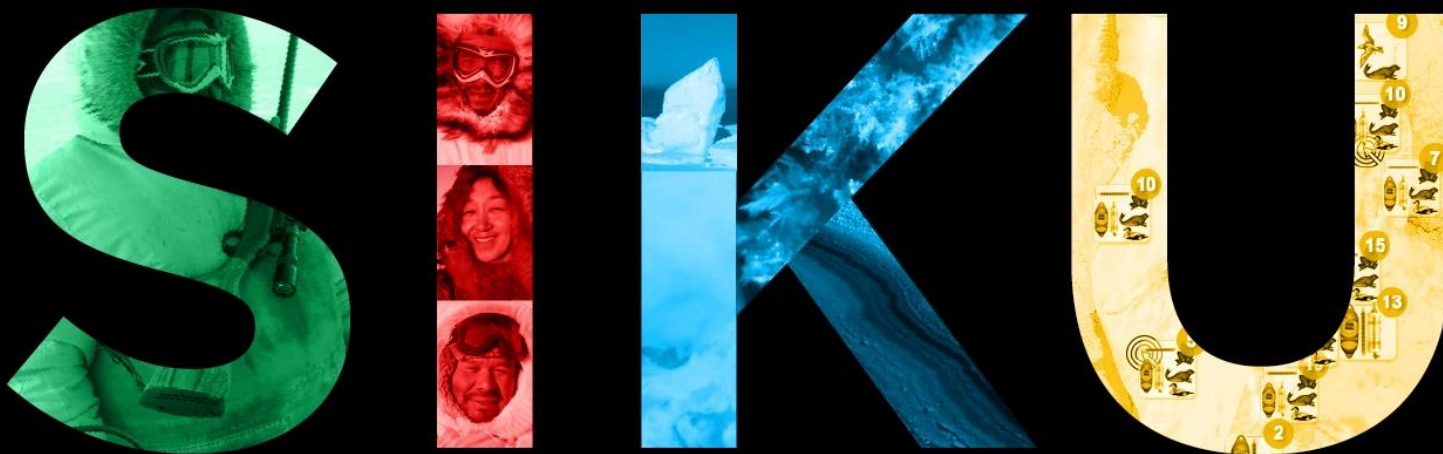
Mathieu Bourgeois
Developer



Philippe Blais
*Interface & Mobile
Developer*

ᐃᑦ

The Inuit Knowledge Wiki & Social Mapping Platform



Google.org Impact Challenge

