



WORLD
RESOURCES
INSTITUTE

HOW NEW DATA APPROACHES CAN HELP FIND THE SIGNALS IN THE NOISE

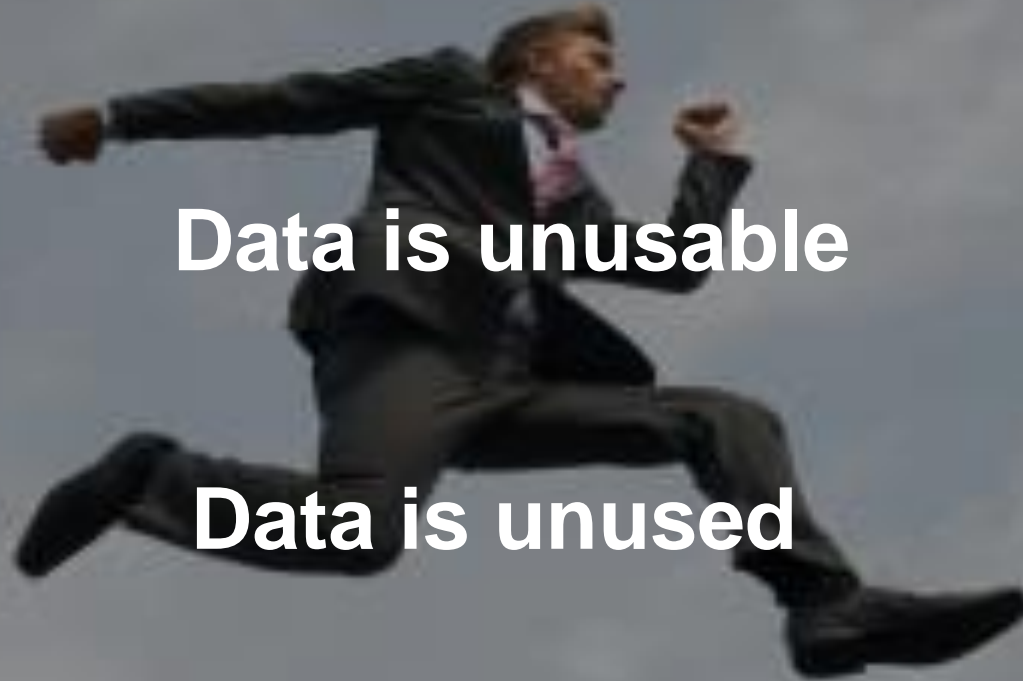
JANET RANGANATHAN, VICE PRESIDENT, SCIENCE & RESEARCH

A BIG GAP EXISTS BETWEEN DATA SUPPLY & USE

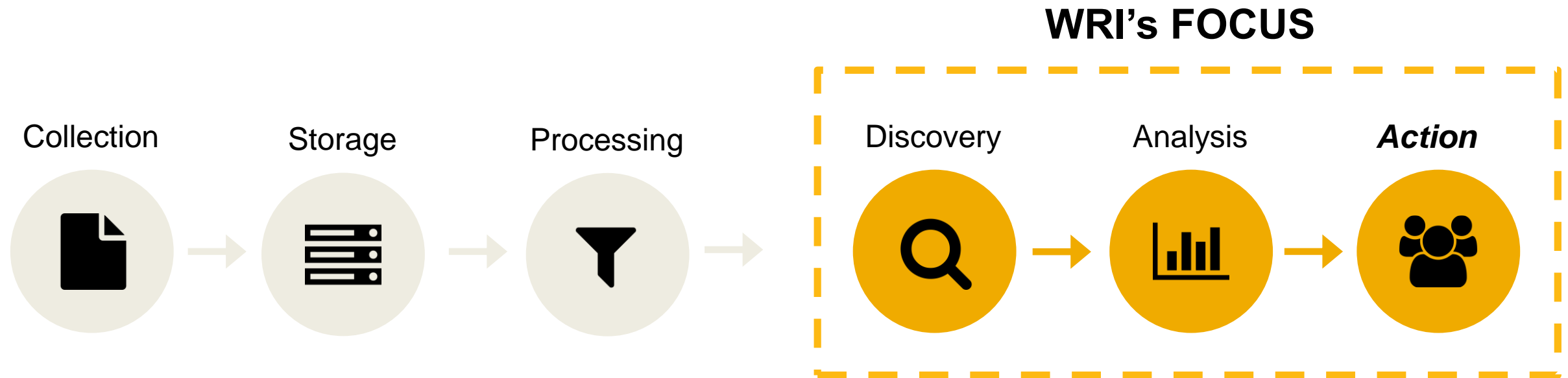
Data is unavailable

Data is unusable

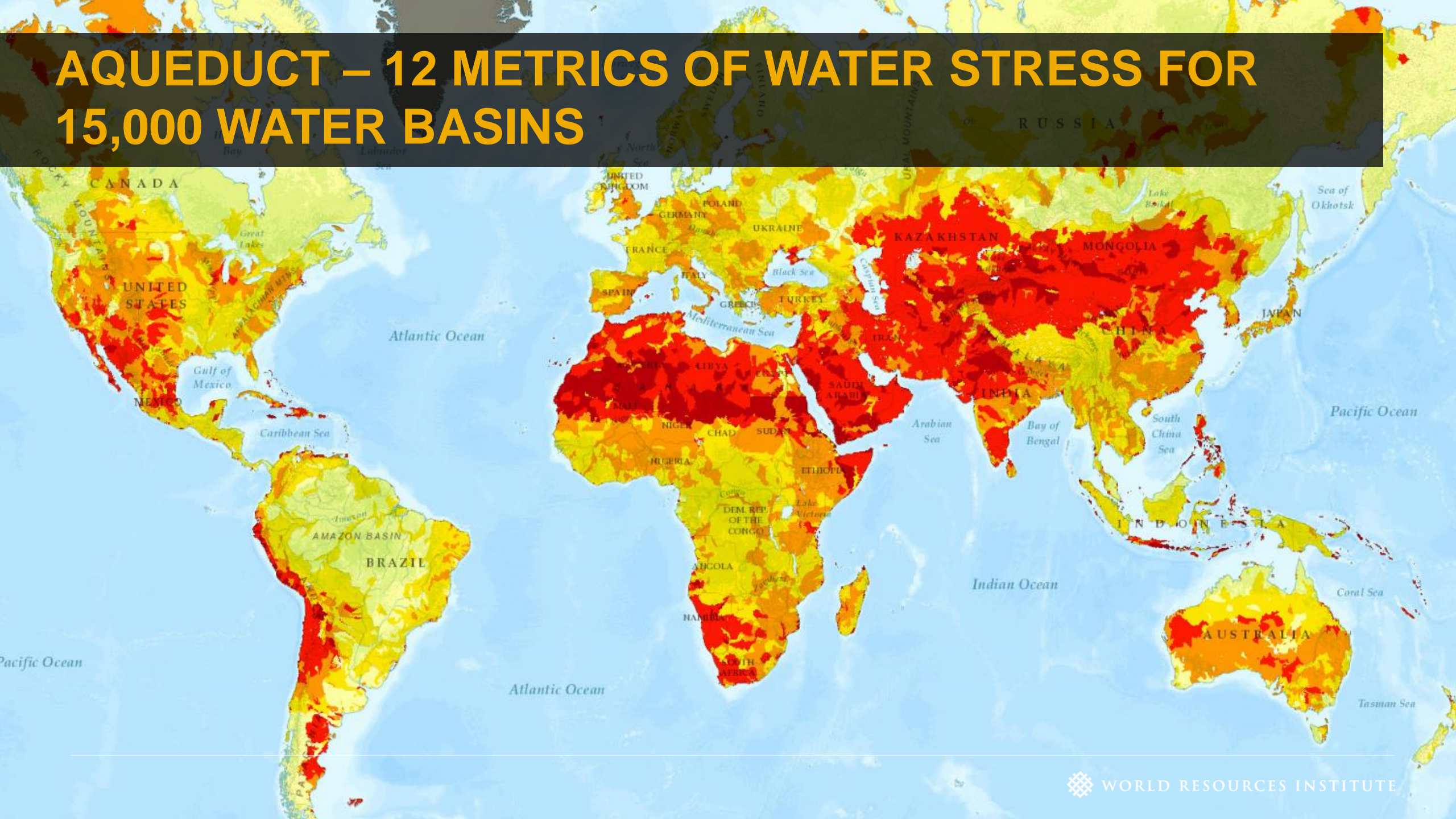
Data is unused



MAKING DATA ACTIONABLE IS A TEAM SPORT!



AQUEDUCT – 12 METRICS OF WATER STRESS FOR 15,000 WATER BASINS



GLOBAL FOREST WATCH

GLOBAL
FOREST
WATCH

HOME

COUNTRIES

STORIES

MAP

BLOG

DATA

ABOUT

ENGLISH



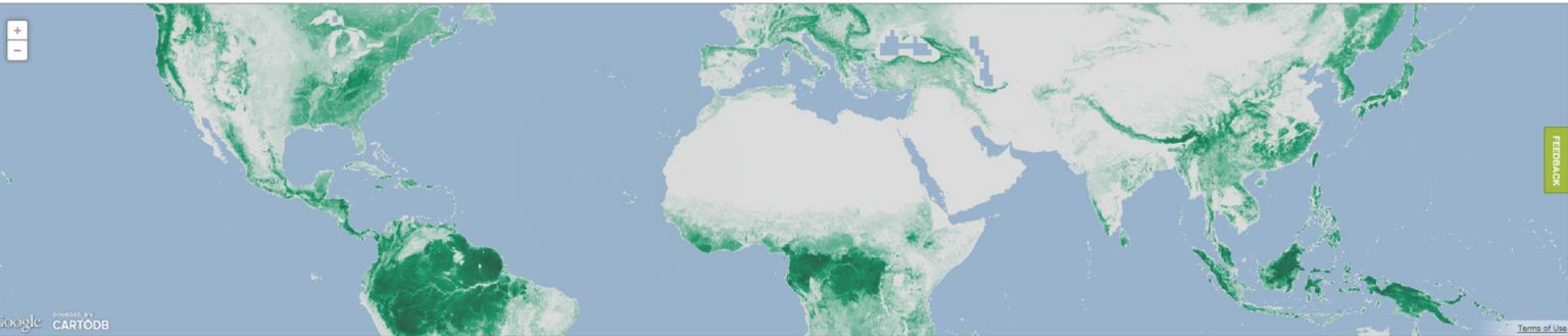
Find out what is happening
in forests right now

44,479

ALERTS IN THE PAST
YEAR

3

NEW FOREST
STORIES



Join the community

Subscribe to the Global Forest Watch discussion group to stay up to date with the latest news on forest clearing.



Analysis tool

Perform forest clearing analysis on the fly and get your answers in real time using our latest data



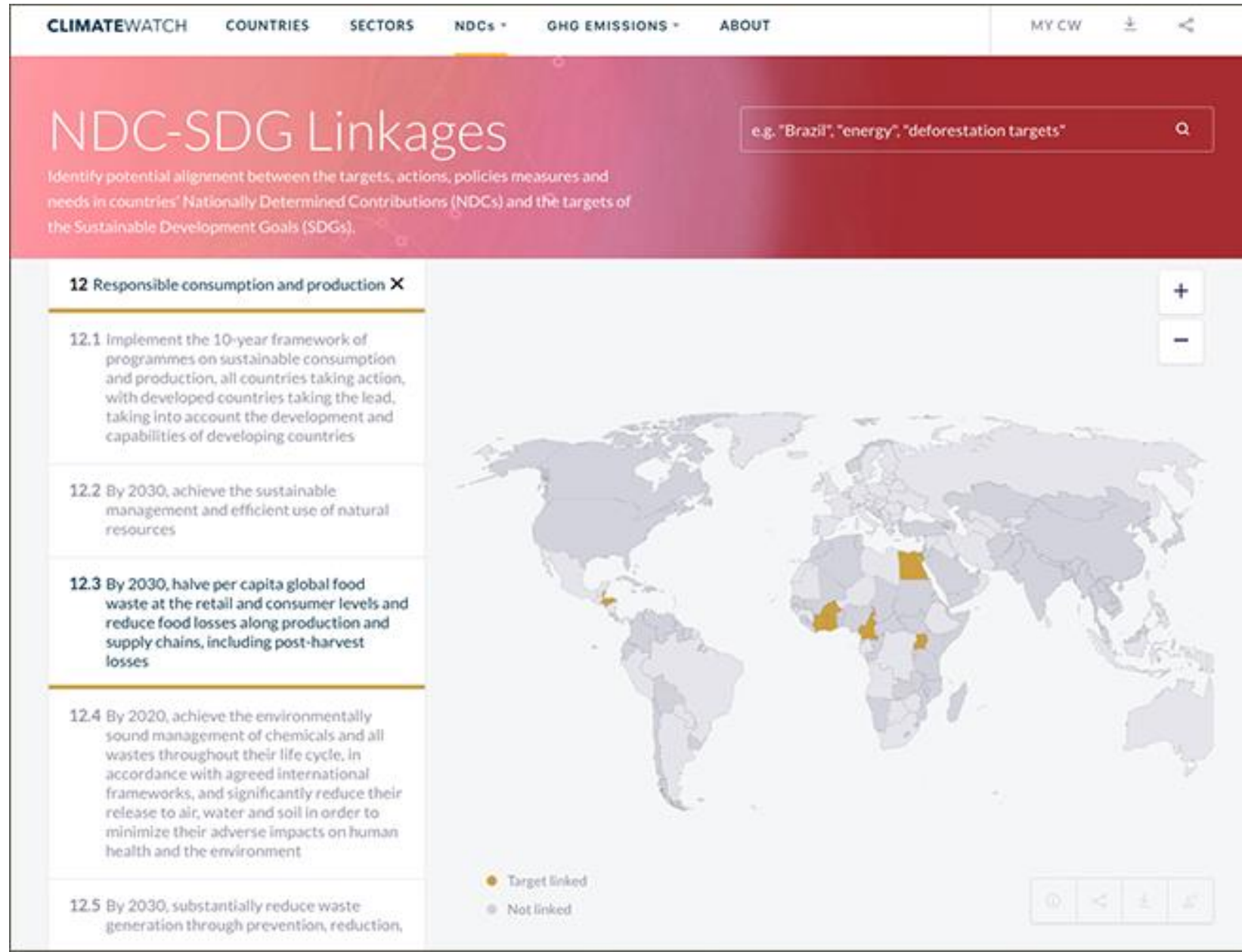
Stay updated

Subscribe to forest clearing alerts and receive frequent updates on your selected countries



WORLD RESOURCES INSTITUTE

CLIMATE WATCH: NATIONAL NDC-SDG INTERLINKAGES



A group of people are standing on a hillside, looking out over a vast, hilly landscape. One person in the foreground is holding a drone controller with a tablet attached, which displays a live feed. A drone is visible in the sky above them. The text "WHAT'S NEXT?" is overlaid in large, bold, yellow letters. A horizontal yellow line is positioned below the text.

WHAT'S NEXT?



Sneak Peek



RESOURCEWATCH

Let's tune in to our
planet's signals together

ResourceWatch.org





Explore a world of natural resource data

Discover the latest data, make connections, and help create a more sustainable planet.

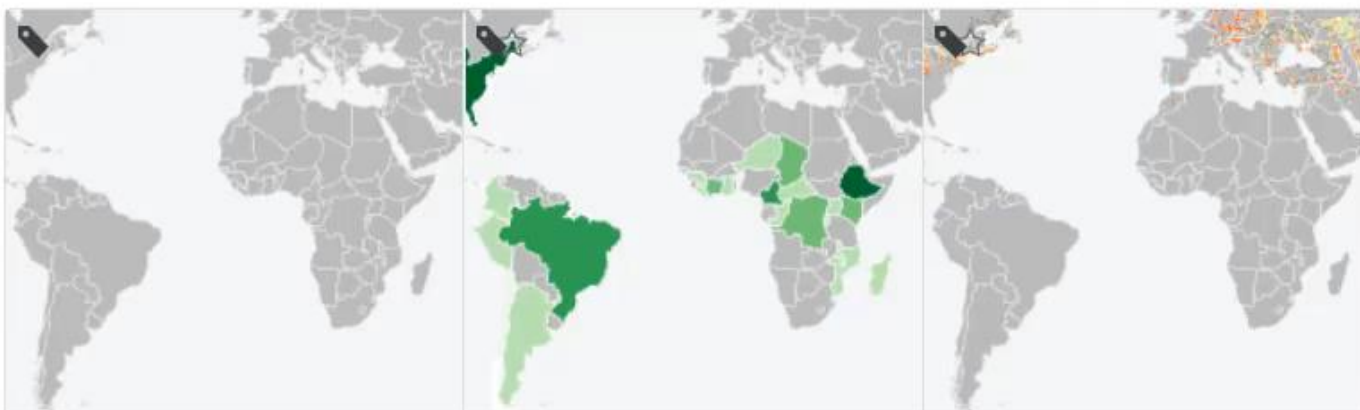


Explore

[Show](#)[Explore Datasets](#)[Dashboards](#)[Planet Pulse](#)[App Gallery](#)

188 datasets

Last modified



Annual Surface Water Extent

Source: EC JRC

Bonn Challenge Restoration Commitment

Source: IUCN/ GPFLR

Average Snow Cover

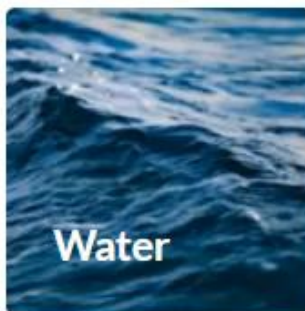
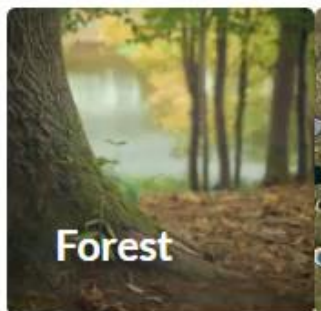
Source: NASA

 **California Counties**

 Counties



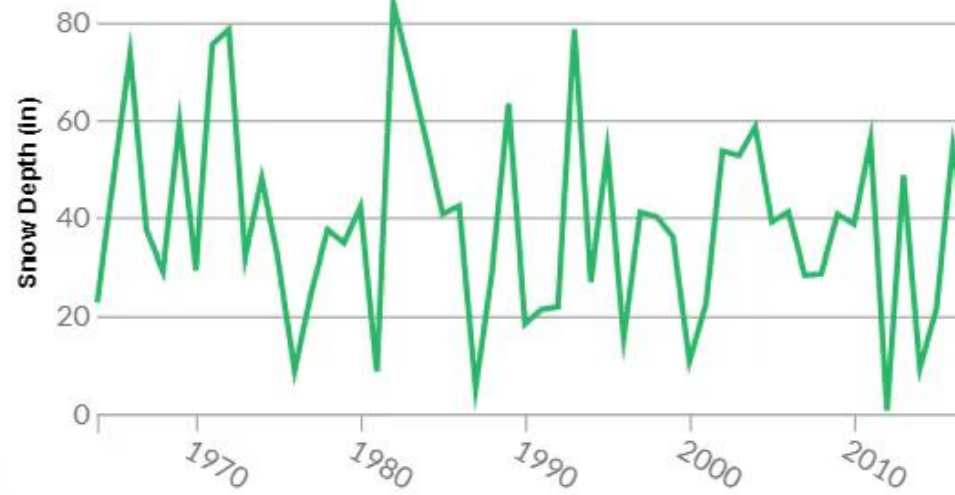
Dashboards



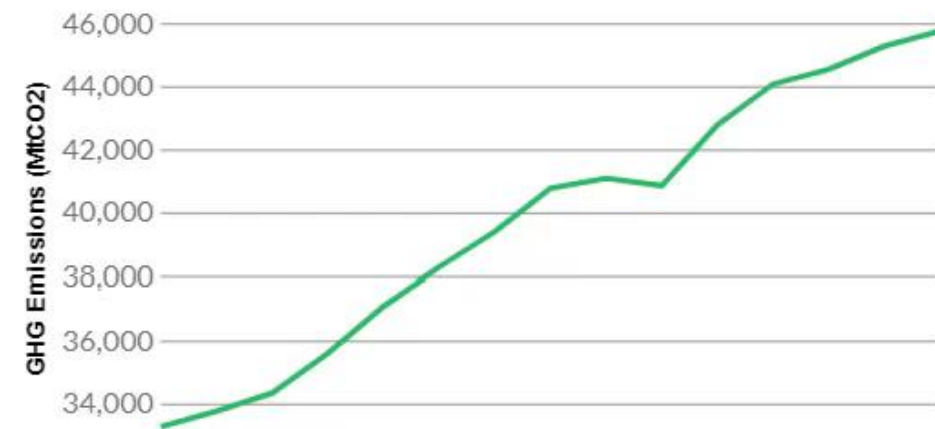
[< Dashboards](#)

Jerry's Dashboard

California Snow Pack (Phillips Station) 



Total Greenhouse Gas Emissions Excluding Land Use Change and Forestry (Metric Tons of CO2 Equivalent) 





FORESTS

WATER

FOOD

CLIMATE

Explore Datasets

Dashboards

Planet Pulse

App Gallery



[← Home](#)

Signals Blog

Explore the stories behind the data and submit your own.

Signal of the Week

Map: As wildfires burn, nearby air quality suffers in California

Sept 2, 2017

A factory is built in your neighborhood. Can you do anything about it?

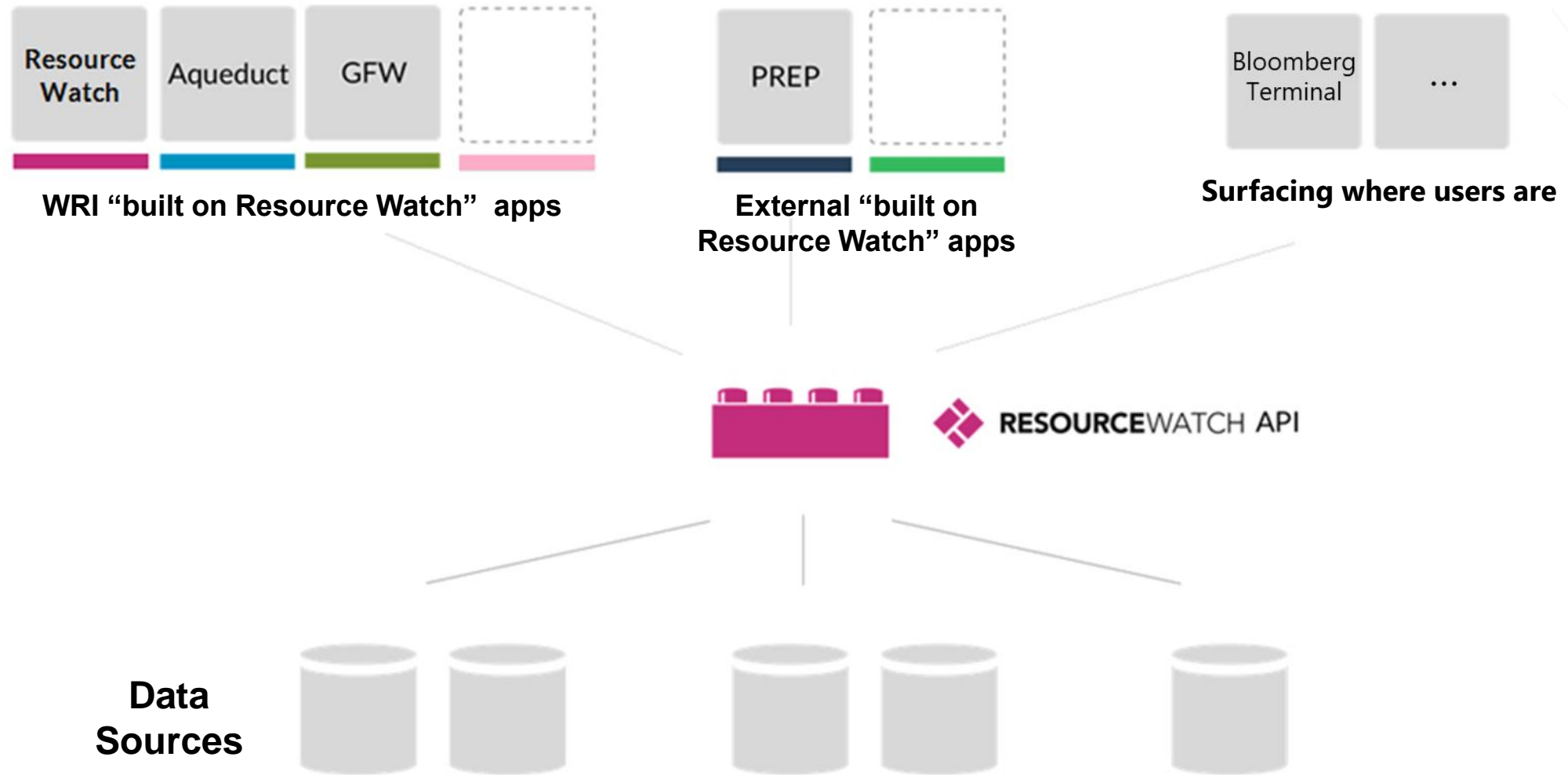


by World Resources
Institute

Resource Watch is open source so others
can build on it & contribute to it



WHAT'S UNDER THE RESOURCE WATCH HOOD?



CONCLUDING MESSAGES

1. Nearly everything is interlinked, but the links between our rapidly changing planet and human-well being are paramount
2. Data is too often trapped in institutional silos & the interlinkages missed
3. Data providers tend to focus on data collection, rather than its use
4. Successful SDG implementation requires integrating data across sources
5. Data revolution is helping to integrate & make data more actionable
6. Resource Watch is a free, open, collaborative, earth monitoring system. Users can combine, analyze, visualize, & share data from multiple sources & spatial/time scales, & build on its open architecture (**Coming April 11, 2018**)



QUESTIONS

ANSWERS

Resource Watch Partners include:

Google

vizzuality.

DigitalGlobe

CARTO

theEARTH
GENOME
REVEALING THE POSSIBLE



THE WORLD BANK

dwb ecology

MARS



Empowered lives.
Resilient nations.



universität
wien



esri



UNEP WCMC



ASTRO
DIGITAL

Bloomberg



United States
Global Change
Research Program



Descartes
Labs

Carnegie
Mellon
University



openaq

espa
ecosystem services
for poverty alleviation



urthecast



SINGULARITY
UNIVERSITY



Radiant.Earth
Earth Imagery for Impact



research
intoresults



skoll global
threats fund



GLOBAL PARTNERSHIP
FOR SUSTAINABLE DEVELOPMENT DATA

THE TILIA FUND



Ministry of Foreign Affairs of the
Netherlands

Walmart



UNITED NATIONS
FOUNDATION

NERC
SCIENCE OF THE
ENVIRONMENT



UNIVERSITY OF
LEICESTER

CLIMATE
CENTRAL



GEO GROUP ON
EARTH OBSERVATIONS

The Hague
Centre for
Strategic
Studies



RESOURCEWATCH

Data Guiding Principles

Open

Can be **freely used, re-used, and redistributed**

Relevant

Help answer questions to **address urgent, global challenges**

Quality

The most **timely, complete, accurate, and consistent** of its kind

Diverse

Cover a **diverse range of themes** for a wide range of audience

Balanced

Distribute **evenly across all themes** on Resource Watch

Agile

Incorporate continuous **iteration, feedback, and evolution**