

Millennium Institute

Policy Integration and Analysis of Synergies

*John Hardy
Millennium Institute
Washington D.C.*



Role in Strategic Planning



MI supports strategic planning:

- **Develop Integrated analytical tools**
- **Perform analysis and reporting**
- **Facilitate multi-stakeholder processes**
- **Build technical capacity**



iSDG Model Role



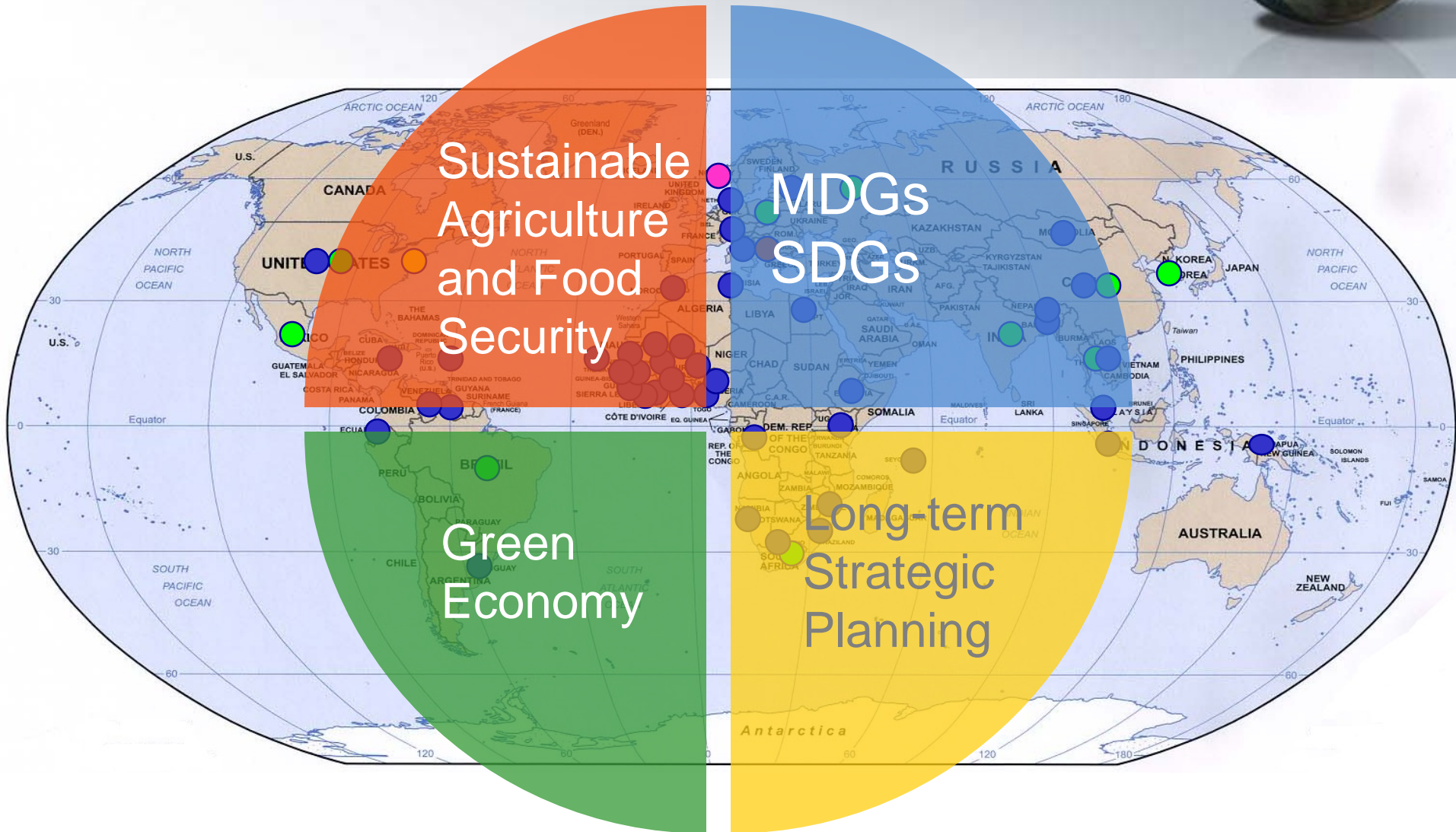
- Visualize progress towards SDGs;
- Evaluate benefits of proposed policies;
- Ensure policy coherence and SDG alignment with national development plans;
- Structure policy implementation to achieve results and monitor progress towards policy objectives.

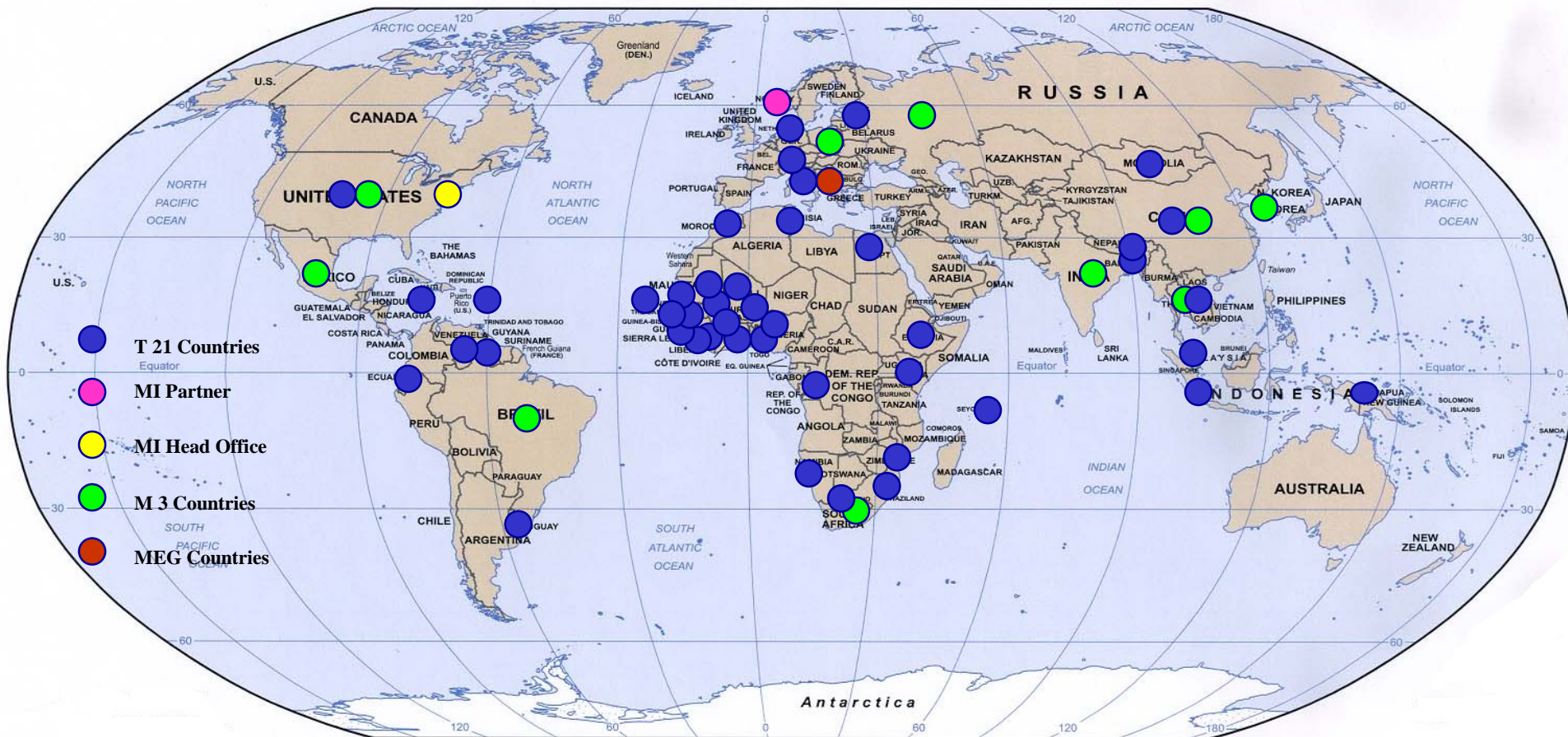
How the iSDG Model works



- Utilizes Vensim modeling software – giving the ability to conduct simulations and policy analyses;
- The interface allows users to chart progress toward each SDG, evaluate benefits of proposed policies and foresee long-term impacts;
- Each application calls for extensive data gathering and coordination with the client.

MI's Sectors







Guiding Principle:

Policy Integration

Breaking silos

Exploiting synergies

Addressing trade-offs

Shared understanding

Our Approach



1. Policy Identification

Identification
of needs and
policies

iSDG Model
calibration and
customization

- Review of policy process and needs
- Framework for policy harmonization
- Selection of key performance indicators
- Definition of key areas of intervention
- Identification of data sources
- Model adaptation to country needs

2. Stakeholder Consultation

Multi-
stakeholder
consultation

Scenario
simulation
and analysis

- Interactive multi-stakeholder workshops
- Live simulation of policy options
- Policy prioritization
- Development of broadly agreed scenarios
- Policy coherence and synergy analysis
- Capacity building and knowledge transfer

3. Report and Monitoring

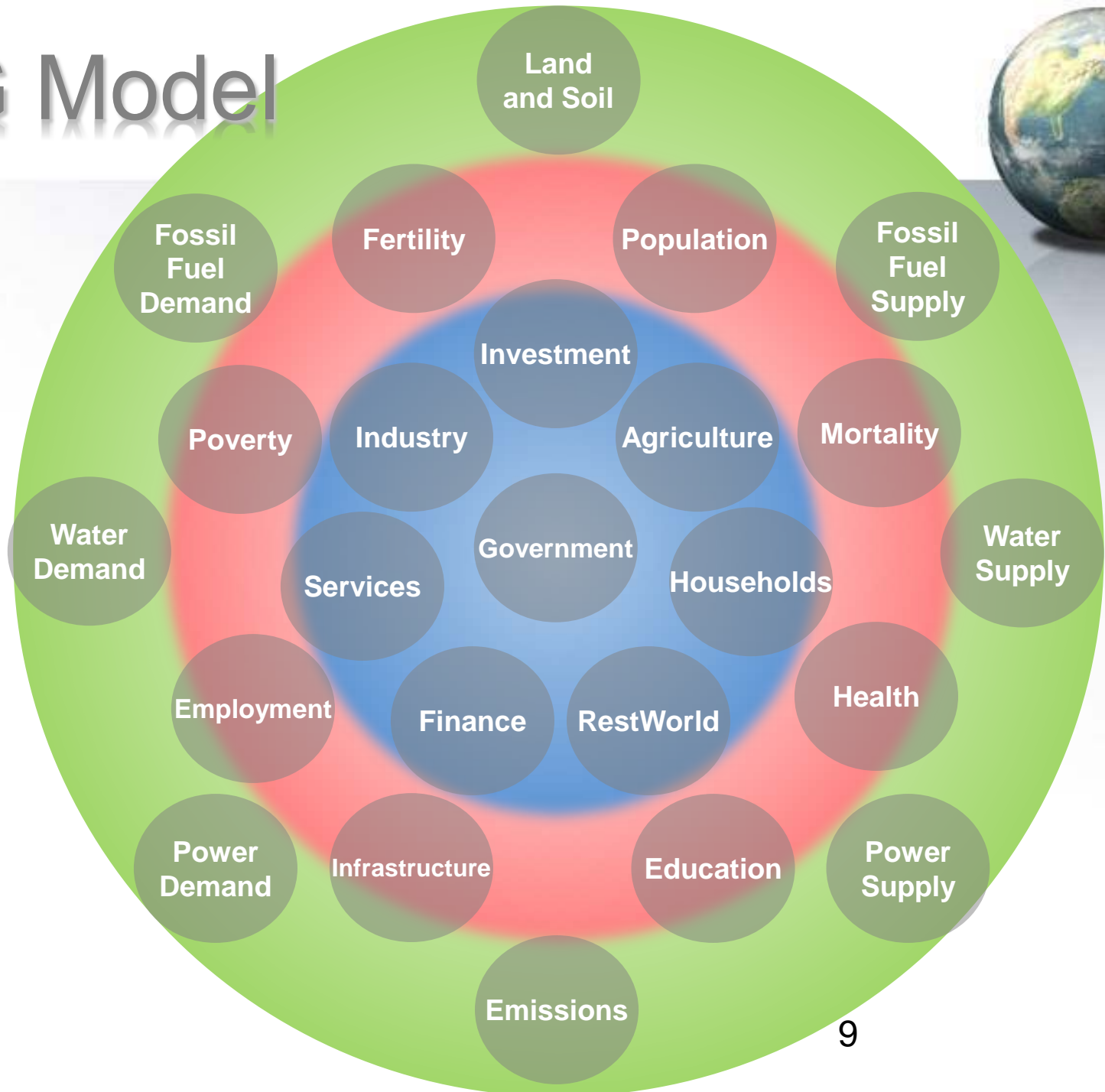
Report
crafting and
review

Monitoring
and post-project
support

- SDG Integrated strategy assessment
- Alignment of national strategies with SDGs
- Multi-strategic framework coherence
- Model and data update
- Monitoring progress against milestones
- Continued support



iSDG Model



iSDG Model - Demo



Doc

ANALYSIS OF SIMULATION RESULTS

1 NO POVERTY



2 ZERO HUNGER



3 GOOD HEALTH AND WELL-BEING



4 QUALITY EDUCATION



5 GENDER EQUALITY



6 CLEAN WATER AND SANITATION



7 AFFORDABLE AND CLEAN ENERGY



8 DECENT WORK AND ECONOMIC GROWTH



9 INDUSTRY, INNOVATION AND INFRASTRUCTURE



10 REDUCED INEQUALITIES



11 SUSTAINABLE CITIES AND COMMUNITIES



12 RESPONSIBLE CONSUMPTION AND PRODUCTION



13 CLIMATE ACTION



14 LIFE BELOW WATER



15 LIFE ON LAND



16 PEACE, JUSTICE AND STRONG INSTITUTIONS



17 PARTNERSHIPS FOR THE GOALS



Summary SDG table

Advanced Tools

Select Indicator

Load Runs

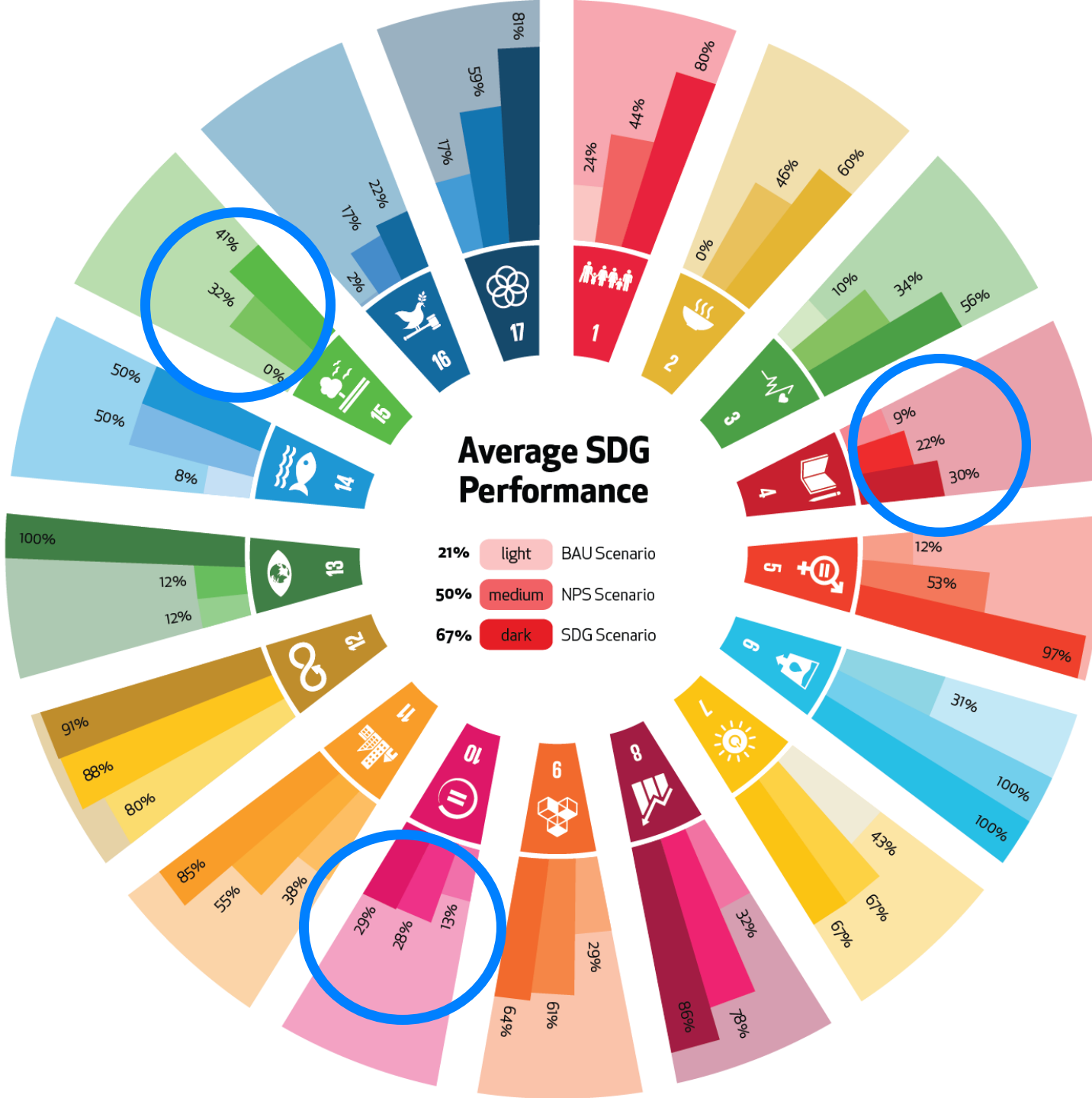
Start a New Simulation

Modify Interventions and Simulate Again



Average SDG Performance

21% light BAU Scenario
50% medium NPS Scenario
67% dark SDG Scenario



Additional Investment (% of GDP):

BAU = 0%

NPS = 4.5%

SDG = 15%

Cote d'Ivoire SDG Performance



- BAU leads to 21% SDG achievement;
- Up to 50% SDG achievement with National Prospective Study (NPS);
- With policy changes, IM achieves 67%;
- Additional spending of 15% of GDP is called for (cf. 4.5% in the NPS);
- NB. Increase in government effectiveness is required and effective implementation.

In Summary...



The iSDG model is designed to support the policy process by:

Assessing current performance and needs

Exploring alternative development paths

Establishing policy coherence

Facilitating stakeholders involvement



Develop successful **integrated**
NDPs aligned with **2030 Agenda**