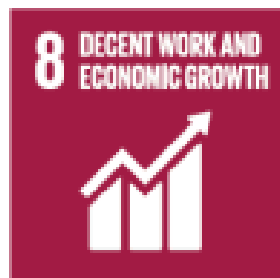







SUSTAINABLE DEVELOPMENT GOALS



- 
- The Natural Capital Project
 - Nature—Ecosystem Service—SDG linkages
 - Three Stories, Three Scales
 - National
 - Regional
 - Global

- 
- The Natural Capital Project
 - Nature—Ecosystem Service—SDG linkages
 - Three Stories, Three Scales
 - National
 - Regional
 - Global

Integrate the values of nature into decisions

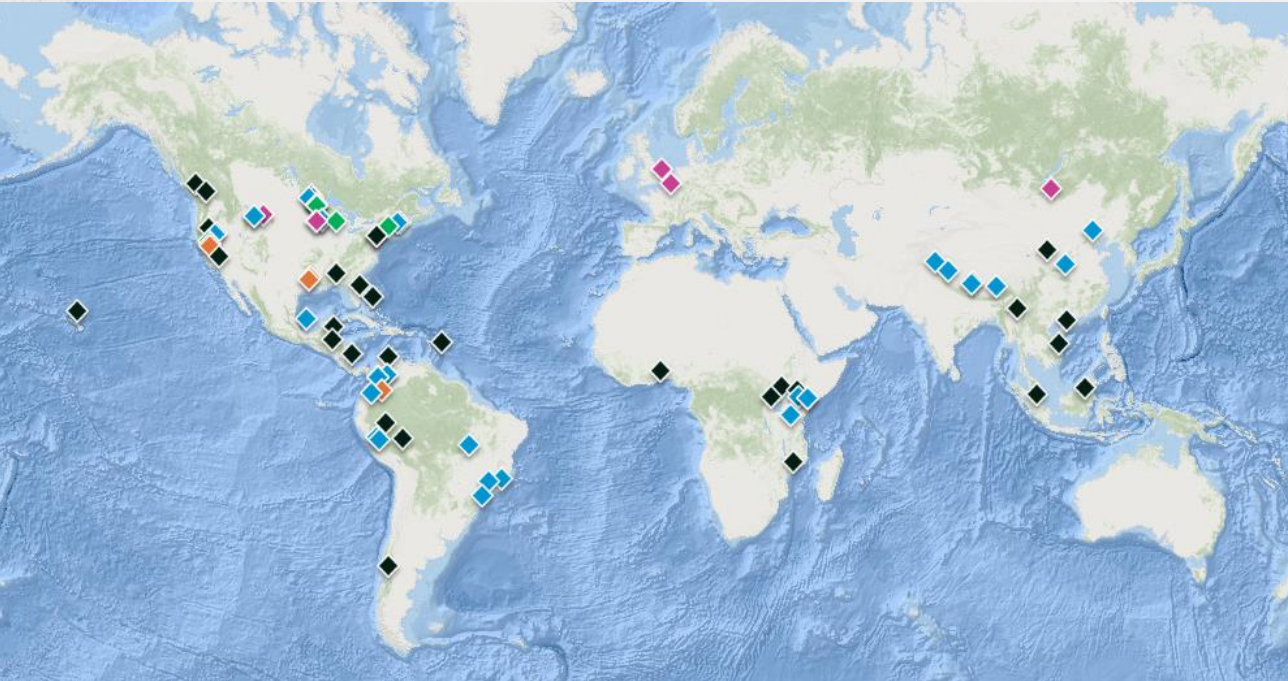


motivate greater, more targeted investments in natural capital




A full-page photograph of a shepherd in a hat and vest herding a large flock of white sheep in a grassy field. A small black and white dog is also visible. The background features rolling green hills and dense forests under a hazy sky. A semi-transparent grey banner is overlaid across the middle of the image.

improve the well-being of people and nature



We work in a wide array of sectors, developing nature-based solutions to problems around the world.

- ◆ Sustainable Development Planning
- ◆ Securing Freshwater
- ◆ Sustainable, Livable Cities
- ◆ Standards for the Private Sector
- ◆ Safe, Resilient Coastal Communities

- 
- The Natural Capital Project
 - Nature—Ecosystem Service—SDG linkages
 - Three Stories, Three Scales
 - National
 - Regional
 - Global

1. Direct positive relationship between nature and SDGs
2. Complex relationship with multiple factors affecting SDG achievement (+/-);
3. Bi-directional relationship: Nature affects achievement & achievement affects nature
4. One-way relationship: Achievement affects nature
5. High-level, often indirect relationships between nature and SDGs



IPBES Global Assessment Report Chapter 3 in progress...

1. **Direct positive relationship between nature and SDGs**
2. Complex relationship with multiple factors affecting SDG achievement (+/-);
3. **Bi-directional relationship: Nature affects achievement & achievement affects nature**
4. **One-way relationship: Achievement affects nature**
5. High-level, often indirect relationships between nature and SDGs



IPBES Chapter in progress...

- 
- The Natural Capital Project
 - Nature—Ecosystem Service—SDG linkages
 - Three Stories, Three Scales
 - National
 - Regional
 - Global

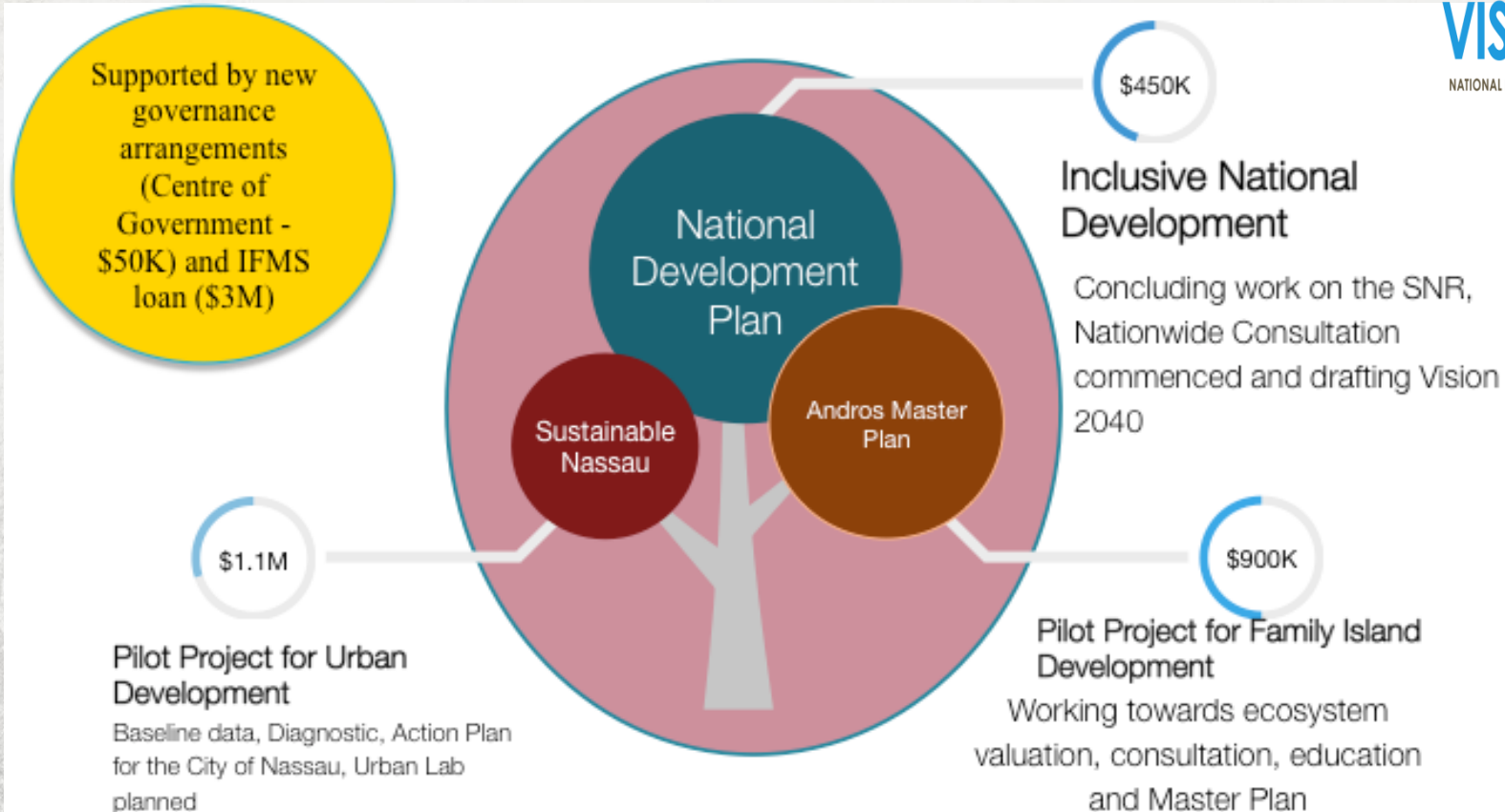
Sustainable Development Goals

National development planning

Development Planning in The Bahamas



VISION2040
NATIONAL DEVELOPMENT PLAN OF THE BAHAMAS



#15Goals-to-Greatness

01 > Modern, Open and Accountable Government



02 > Strong Public Institutions



03 > A Law Abiding Society



04 > Administration of Justice



05 > Modern, Sustainable, Accessible Health-care



06 > Best-in-class Education



07 > Eradicate Poverty and Discrimination



08 > A Fair Land Tenure & Administration System



09 > Effective Interconnected Transport



10 > Modern Infrastructure



11 > Sustainable Natural Environment



12 > A Healthy Macro-economy



13 > A Competitive Business Environment



14 > A Diversified & Resilient Economy



15 > A Fair, Flexible Labour Regime




www.vision2040bahamas.org



info@vision2040bahamas.org



242-702-5565



[Vision2040Bahamas](https://www.facebook.com/Vision2040Bahamas)



[@Vision2040Bahamas](https://twitter.com/Vision2040Bahamas)



[Vision2040Bahamas](https://www.instagram.com/Vision2040Bahamas)

Governance



Human Capital



Environment



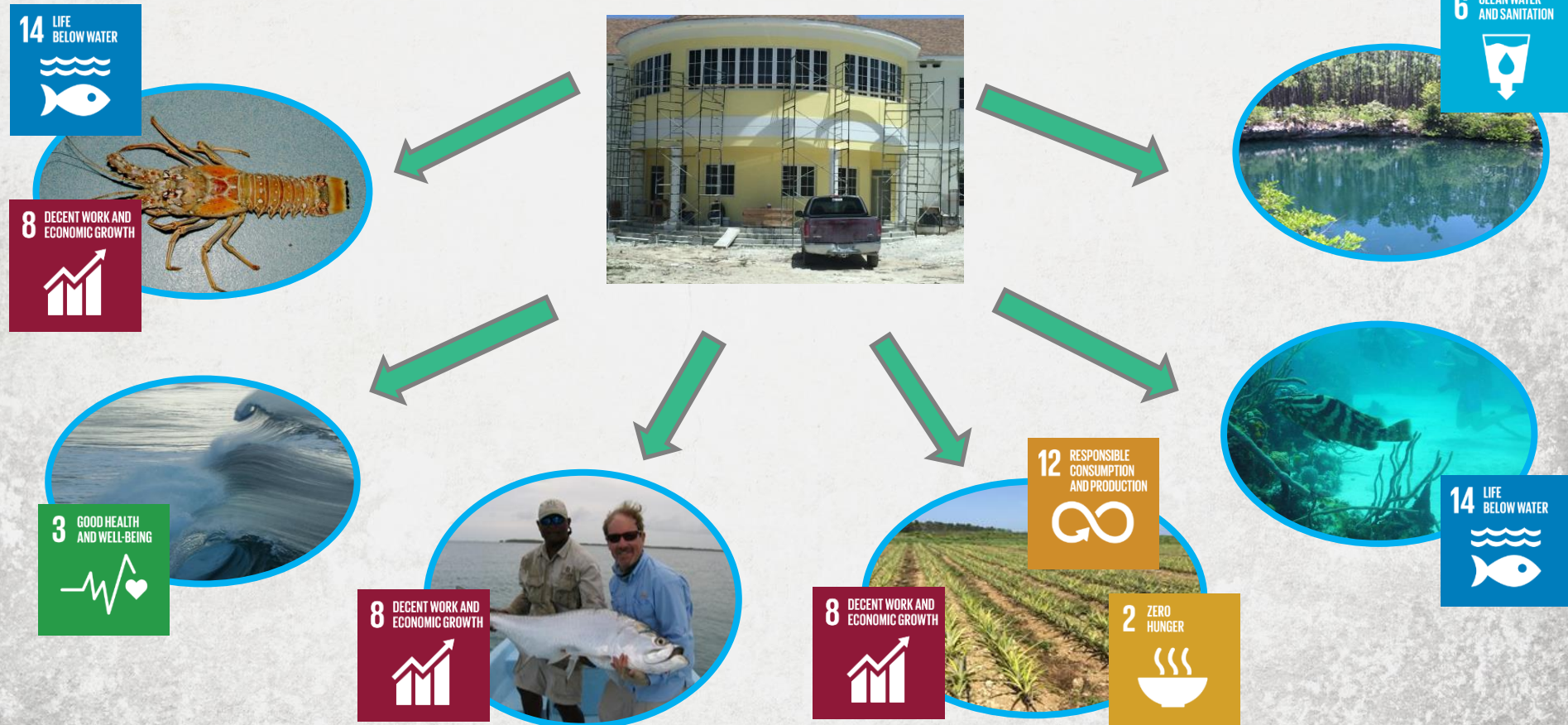
Economy



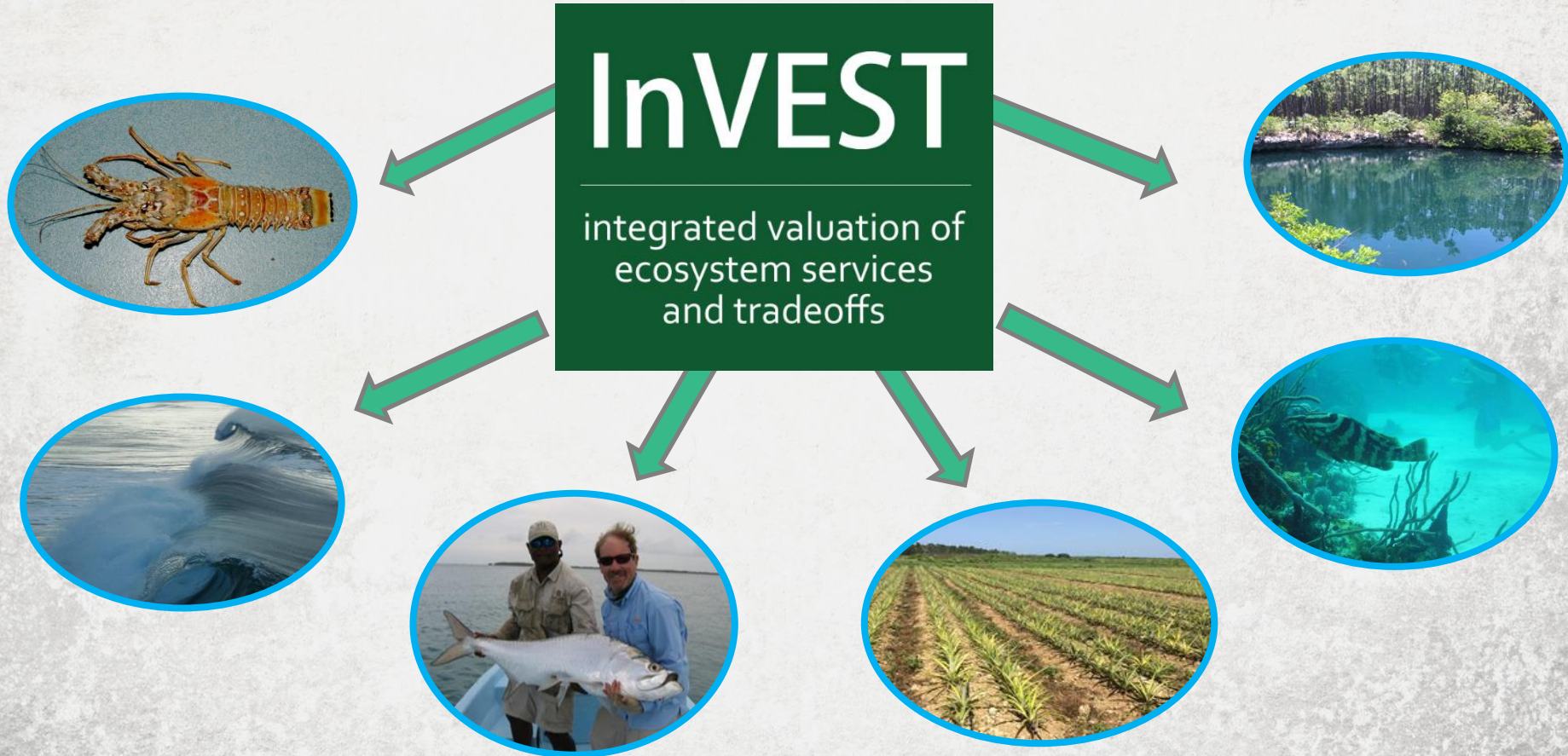
Map current and future ecosystem services



Map current and future ecosystem services



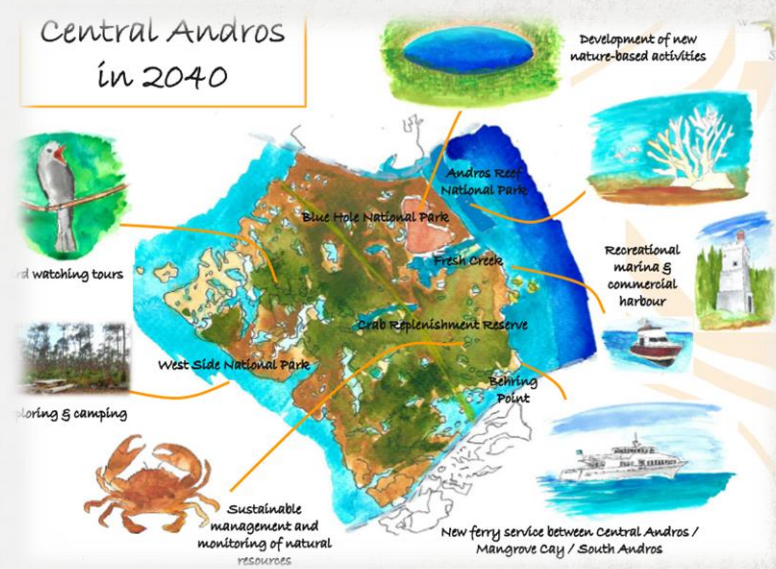
Map current and future ecosystem services



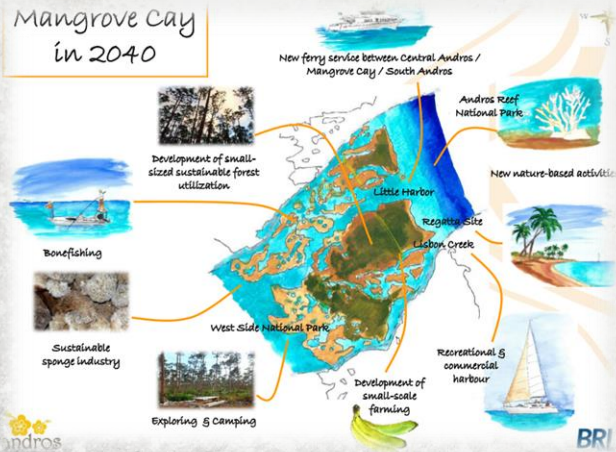
North Andros in 2040



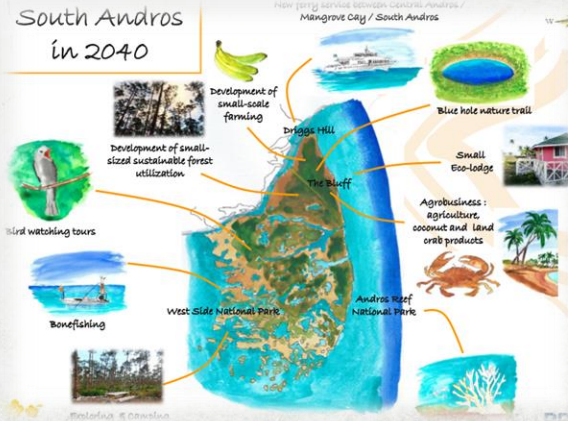
Central Andros in 2040



Mangrove Cay in 2040



South Andros in 2040



- 
- The Natural Capital Project
 - Nature—Ecosystem Service—SDG linkages
 - Three Stories, Three Scales
 - National
 - Regional
 - Global

Volta Basin Authority-- Strategic Action Plan

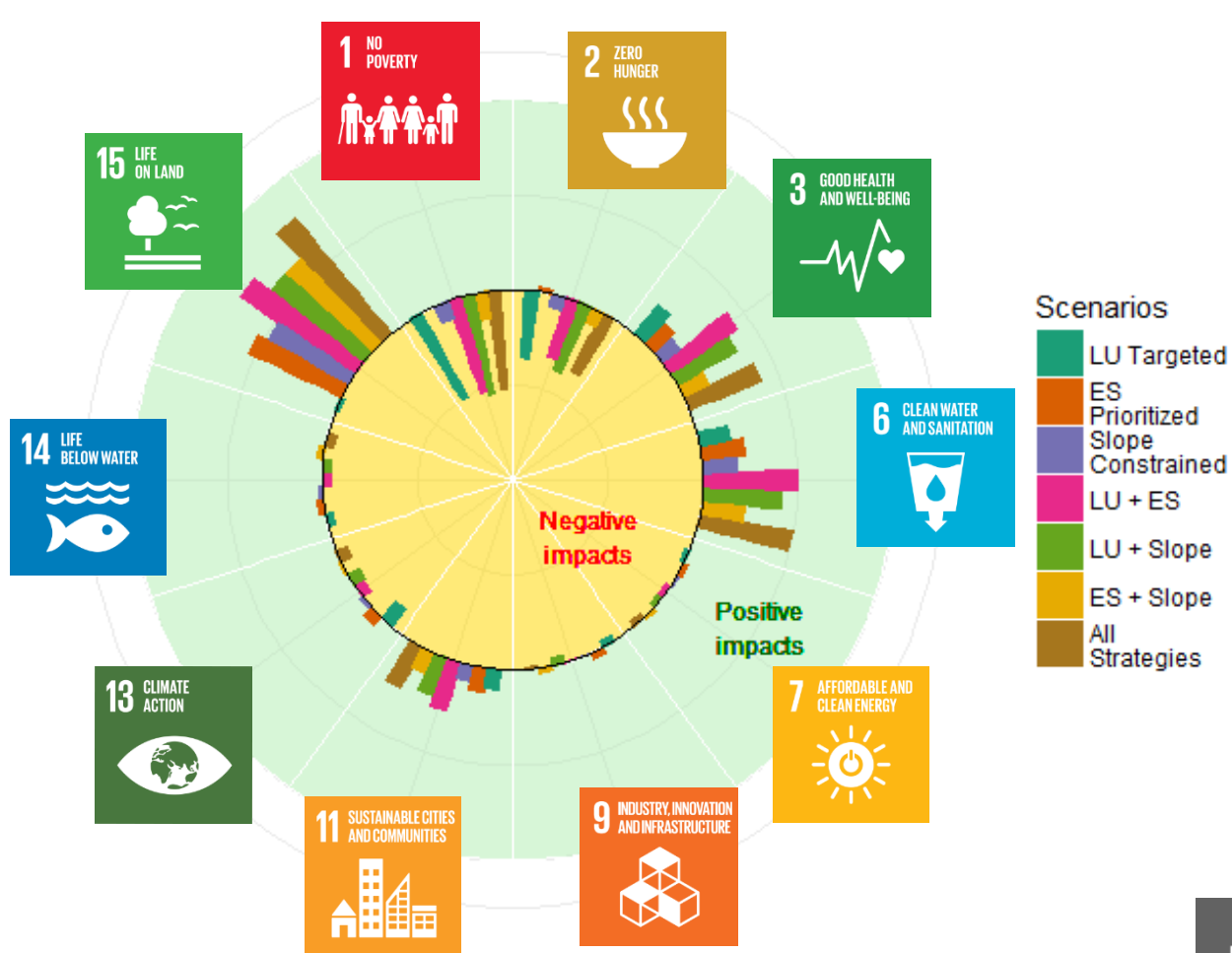


Volta Basin - West Africa

- River
- Volta Basin



GLOWA Volta, 2007
ZEF - Zentrum für Entwicklungsforschung/
Center for Development Research
University of Bonn
map design: Christian Sebaly



Relative impacts of scenarios on SDGs

(based on % change in ecosystem service supply from business as usual scenario)

- 
- The Natural Capital Project
 - Nature—Ecosystem Service—SDG linkages
 - Three Stories, Three Scales
 - National
 - Regional
 - Global



Global InVEST for IPBES Scenarios Assessment

Becky Chaplin-Kramer, Rich Sharp,
Justin Johnson, Kate Brauman, Jess
Silver, Adrian Vogl, Charlotte Weil,
Steve Polasky



Ecosystem Services for Global Assessment



Coastal Resilience



Water Quality



Water Security

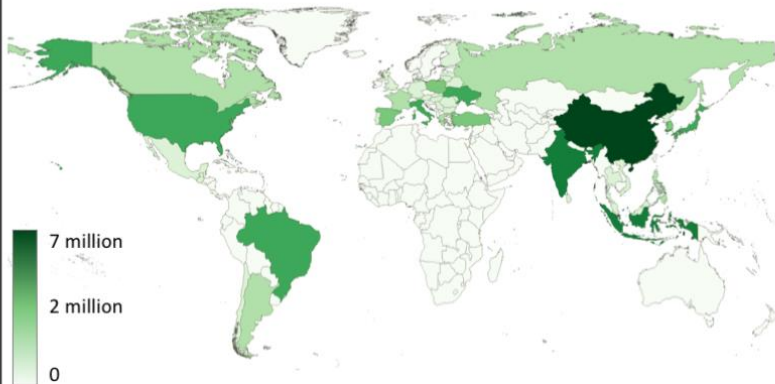


Food Security



Pollination

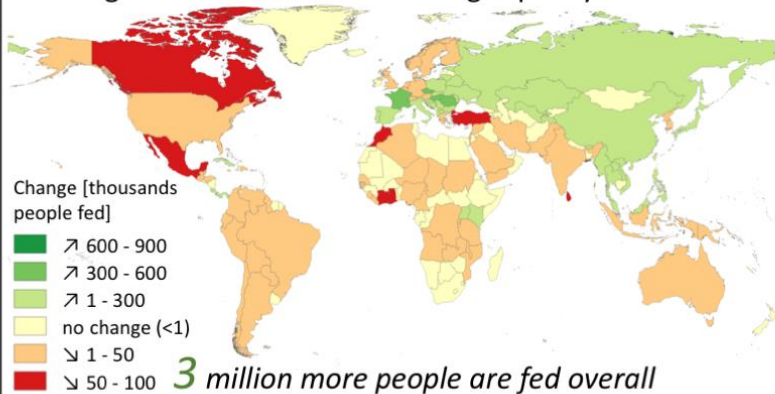
People currently fed by wild pollinators



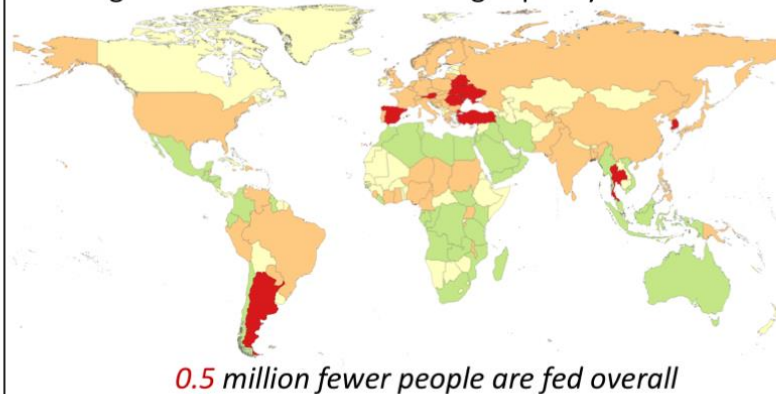
Change in Wild Pollinators feeding capacity under **SSP1**



Change in Wild Pollinators feeding capacity under **SSP3**



Change in Wild Pollinators feeding capacity under **SSP5**



Wild pollinators feeding capacities

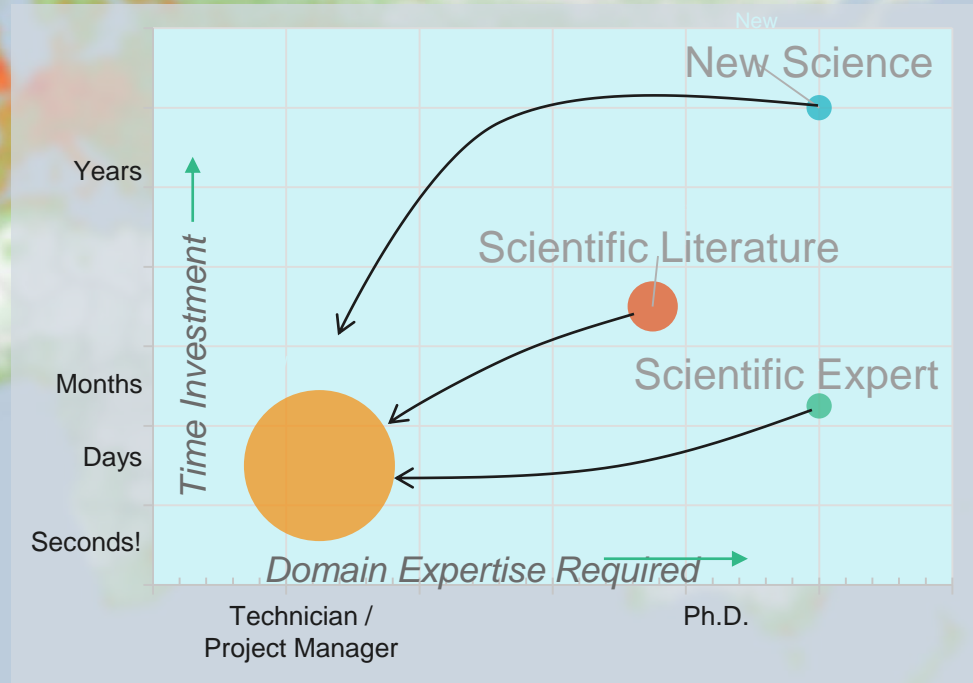
(according to dietary requirements, in terms of calories and key nutrients: iron, folate and vitamin A)

The NatCap Software Platform

InVEST

integrated valuation of
ecosystem services
and tradeoffs

The distillation of science into software models and the distribution of that software to anyone who can use it.



Take-homes

- Nature and nature's contributions to people are critical to achieving many SDGs
- Global prosperity requires acknowledgment of interconnections between the human enterprise and nature
- We have the science, tools, and understanding today to explore trade-offs and synergies and to use information about these linkages to make smarter decisions for a more sustainable world

www.naturalcapitalproject.org

anne.guerry@stanford.edu

Twitter: @AnneGuerry

