A series of thin, black, overlapping geometric lines forming various polygons and shapes, primarily located in the upper left and center of the slide.

THE ONE HEALTH APPROACH TO ENSURE SYNERGIES FOR ACCELERATED SDG PROGRESS

Hyeyoung Song,
Technical Officer, WHO WPRO ACE



ONE HEALTH AND NEED FOR GLOBAL COORDINATION

Complex and Interconnected Threats

- Rising health threats at the Human-Animal-Environment Interface (SARS, avian influenza, COVID-19...): 60% of emerging infectious diseases are zoonotic
- Misuse of antimicrobials in humans, livestock, aquaculture, and the environment
- Climate change is influencing vector-borne diseases

The One Health Approach

- Integrated, unifying approach that aims to sustainably balance and optimize the health of people, animals and ecosystems.
- Address the full spectrum of disease control

→ Persistent and emerging health threats, fragmented sectoral responses, global environmental degradation together with its social and economic costs requires **coordinated prevention and management.**

**DECLINES IN
ECOSYSTEMS
AND
BIODIVERSITY**



MIGRATION



**URBANIZATION &
GLOBALIZATION**



One Health

**INTENSIVE
AGRICULTURE**



**INTENSIVE
ANIMAL
PRODUCTION**



**POLLUTION, CHEMICALS AND
WASTE**



**One Health
provides a way to link these risks
into joint, cross-sectoral
solutions.**

OVERVIEW OF THE QUADRIPARTITE



Members

- FAO (Food and Agriculture Organization)
- UNEP (United Nations Environment Programme)
- WHO (World Health Organization)
- WOAAH (World Organisation for Animal Health, formerly OIE)

OVERVIEW OF THE QUADRIPARTITE



Purpose

- Coordinate and strengthen the **One Health approach globally**, addressing interconnected risks at the human-animal-environment interface.
- Promote **prevention, preparedness, and response to health threats**, including zoonotic diseases, antimicrobial resistance (AMR), and climate-related health risks.



BACKGROUND AND HISTORY

The Quadripartite Collaboration is an evolution of the Tripartite Partnership (FAO, WHO, WOA) established formally in 2010, with focus on **human/animal/environment interface**

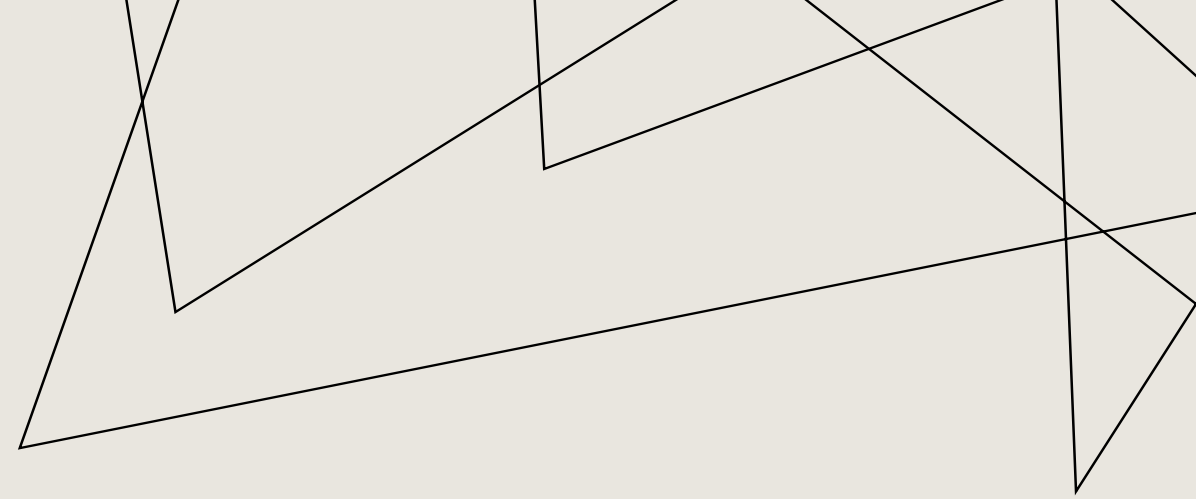
Historical focus on zoonotic diseases and antimicrobial resistance (AMR)

In 2022, UNEP officially joining and creation of the Quadripartite collaboration on One Health → acknowledgement that **environmental degradation, climate change, and ecosystem disruption** are central drivers of health risks

Increased political commitment:

- Elevated Environmental Health Integration
- Strengthen global governance
- Quadripartite One Health Joint Plan of Action (2022–2026)
- Set up a One Health high level expert panel (2nd term, 2024–2026)
- Launch of the Quadripartite One Health Governance CoP (April 2025)

CHALLENGES AND DIFFICULTIES REMAINING WITHIN ONE HEALTH



- **Governance and Coordination Complexity:** Integrating environmental health considerations into One Health remains challenging, with environment ministries often underrepresented in health policy discussions.
- **Funding Constraints:** Environmental health interventions often receive less funding compared to more immediate human and animal health priorities.
- **Data Gaps and Silos:** Limited sharing of environmental surveillance data across sectors hampers early warning systems for outbreaks.
- **Competing Priorities in Low- and Middle-Income Countries:** Many countries face resource constraints and prioritize immediate health system strengthening over longer-term One Health investments.
- **Operationalizing the One Health Approach:** Moving from high-level commitments to practical, on-the-ground action is still inconsistent across regions and sectors → Guide to implementing the One Health Joint Plan of Action (OH JPA)

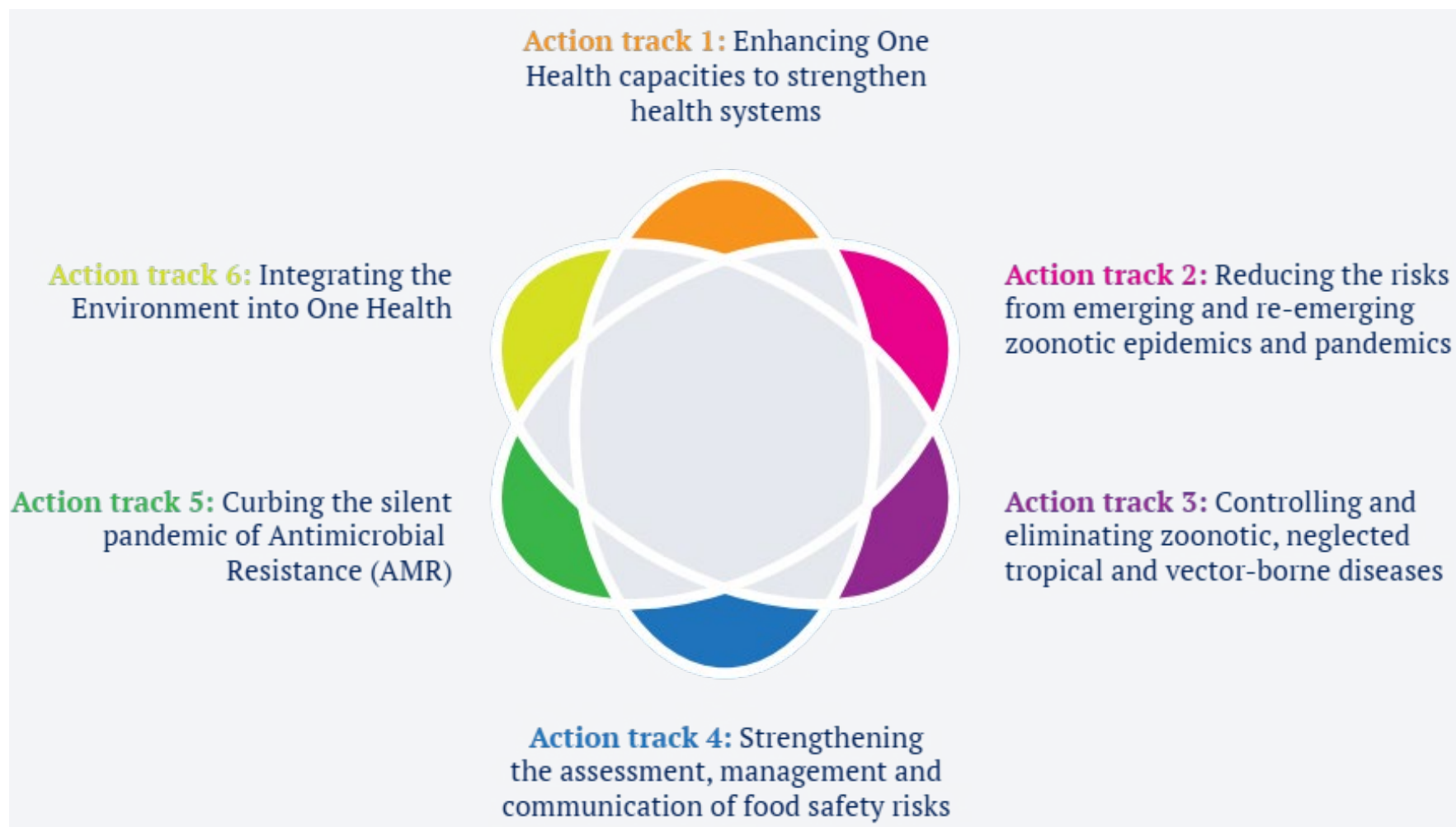
ABOUT THE QUAD STRATEGIC FRAMEWORK (2022-2026)

Expanding on environmental dimension

- Increase integration of environmental ministries and sectors into One Health governance at national and regional levels.
- Mobilize environmental data for health surveillance and early warning systems.
- Promote nature-based solutions and ecosystem restoration to mitigate disease risks.
- Address environmental drivers of AMR, especially through improved waste management.



ABOUT THE QUAD STRATEGIC FRAMEWORK (2022-2026)



MAJOR ENVIRONMENTAL HEALTH-RELATED COMMITMENTS

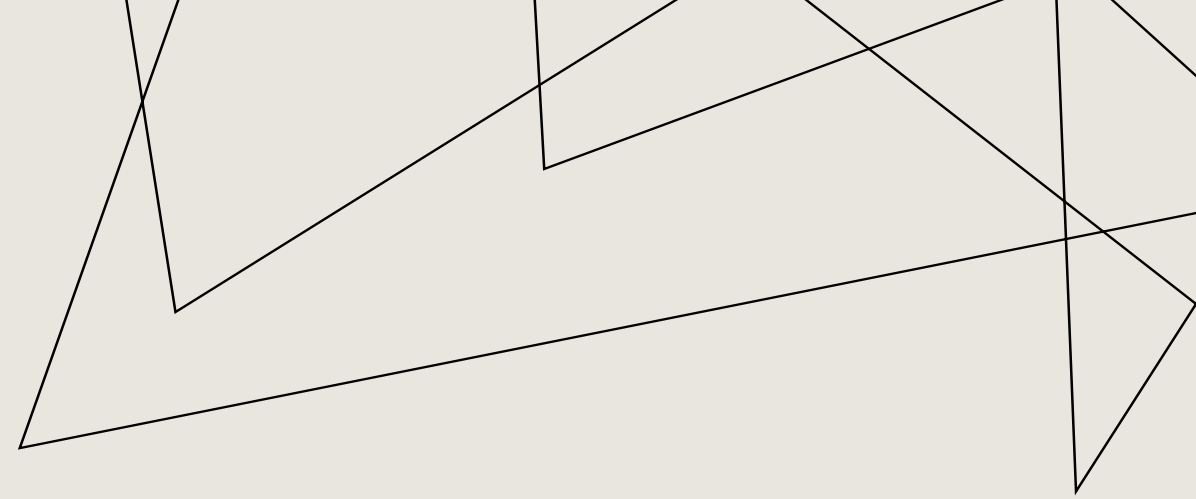
- Recognition of the Environmental Crisis as a Driver of Health Risks including climate change as multiplier
- **Action Track 6:** Integrating the Environment into One Health
 - Protecting and restoring ecosystems.
 - Mainstreaming environmental health into One Health policy frameworks.
 - Integrating environmental data and knowledge into surveillance and decision-making.
 - Promoting a One Health workforce that includes environmental expertise

Action track 6: Integrating the
Environment into One Health



EXAMPLE OF ACTIVITIES UNDER ACTION TRACK 6 INTEGRATING THE ENVIRONMENT INTO ONE HEALTH

- **Integrate One Health in national strategies** and action plans related to environment (NDCs, NBSAPs, etc.)
- **Promote sound management** of chemicals and waste, prevention, reduction and control of pollution
- **Review, update and implement relevant national plans, policies, legislation and programmes** on One Health to integrate environmental dimensions
- **Support Implementation of CBD Global Action Plan** on Biodiversity and Health
- **Map** interoperability between health, animal diseases and environment databases and information systems
- **Develop an interoperable One Health training course (FTP-WEBE)** for professionals in ministries responsible for environment
- **Develop core modules** on environment, biodiversity and ecosystem health in the medical, veterinary and public health academic curricula and research agendas



ENSURING SYNERGIES FOR SDG PROGRESS



ENSURING SYNERGIES FOR SDG PROGRESS

One Health is a **holistic approach** by linking human, animal, and environmental health with education, policy, governance, and digital systems.

Through these linkages, **multiple SDGs** are **addressed simultaneously**, creating co-benefits for health, ecosystems, and sustainable development.





THANK YOU