

GLOBAL EDUCATION MONITORING REPORT

2022 HLPF Learning, Training and Practice Special Session

12 July 2022

gemreport@unesco.org



Online resources

1. Education-Profiles.org (**PEER**)
2. Education-Progress.org (**SCOPE**)
3. Education-Estimates.org (**VIEW**)
4. Education-Inequalities.org (**WIDE**)



1. PEER profiles

education-profiles.org



Launched in 2020

- Documents laws and policies on key issues

Two types of profiles

1. On report theme, covering **all** countries

- ▶ inclusion
- ▶ private education regulation
- ▶ technology and education
- ▶ school leadership



2. On other themes, covering **some** countries

- ▶ financing for equity (80)
- ▶ climate change education and communication (20+30)

2. SCOPE

Telling a story



Online, interactive monitoring report on 6 themes:



Access



Equity



Learning



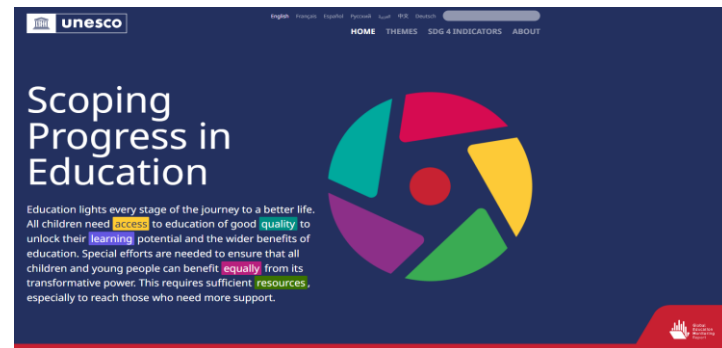
Quality



Finance

Cross-country and time-series comparisons

Links to SDG 4 monitoring framework and UIS dataset

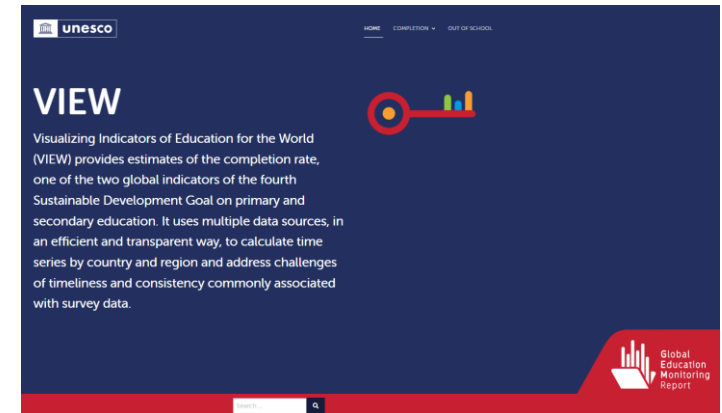
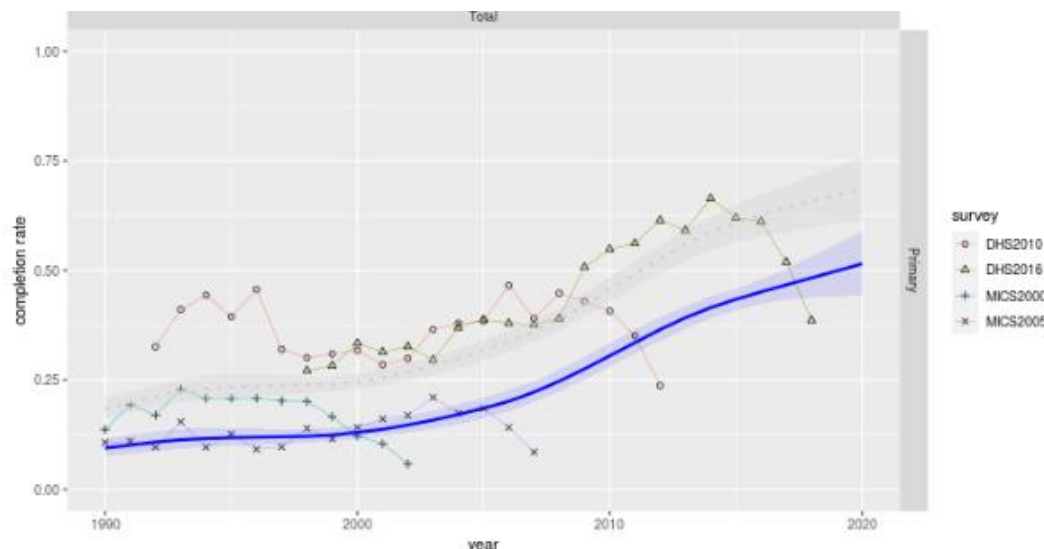


3. VIEW

education-estimates.org

Shows data trends by compiling different data sources in a new statistical model

Showcase the challenges of low and late completion many countries are facing
BURUNDI:



Due Sep 2022

4. WIDE

Connecting the dots

Since October 2012

3 intersecting dimensions

25 indicators

6 dimensions

160+ countries

1000+ surveys

Time comparisons

Shareable

World Inequality Database on Education

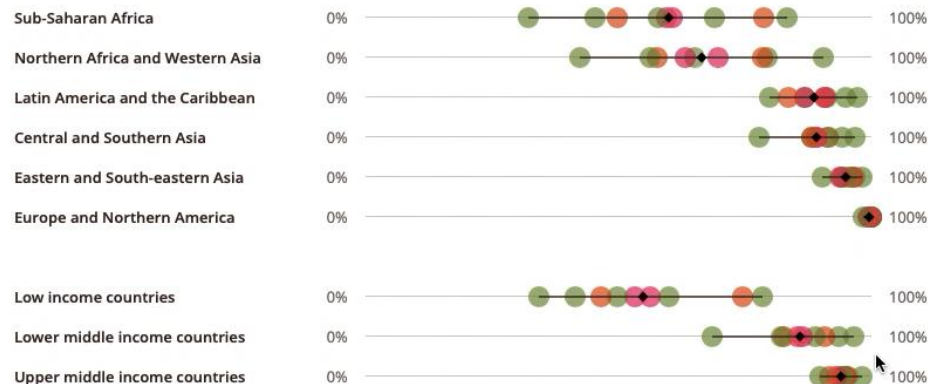
The World Inequality Database on Education (WIDE) highlights the powerful influence of circumstances, such as wealth, gender, ethnicity and location, over which people have little control but which play an important role in shaping their opportunities for education and life. It draws attention to unacceptable levels of education inequality across countries and between groups



Primary completion rate

Percentage of (i) children and young people aged 3-5 years above primary school graduation age and (ii) young people aged 15-24 years, who have completed primary school.

Export Share



Sort by

- ☒ Most deprived
- ☐ Absolute disparity
- ☐ Relative disparity

Age Group

- ☒ Primary graduation age
- ☐ 15-24

Disparities

- ☒ All
- ☐ Gender
- ☐ Location
- ☐ Region
- ☐ Wealth
- ☐ Ethnicity
- ☐ Religion

Options

- ☐ Share of population

Regional groups

- ☒ All
- ☐ Central and Southern Asia
- ☐ Eastern and South-eastern Asia
- ☐ Europe and Northern America

Questions

1. What type of data would be useful for your work?
2. Are these tools useful - why/why not?
3. Would longer trainings sessions be useful for you/your organization?