



**CLIMATE AND SDG
SYNERGIES**



Virtual Learning Series

The graphic consists of a series of seven right-pointing chevrons in a gradient of colors from yellow to red.

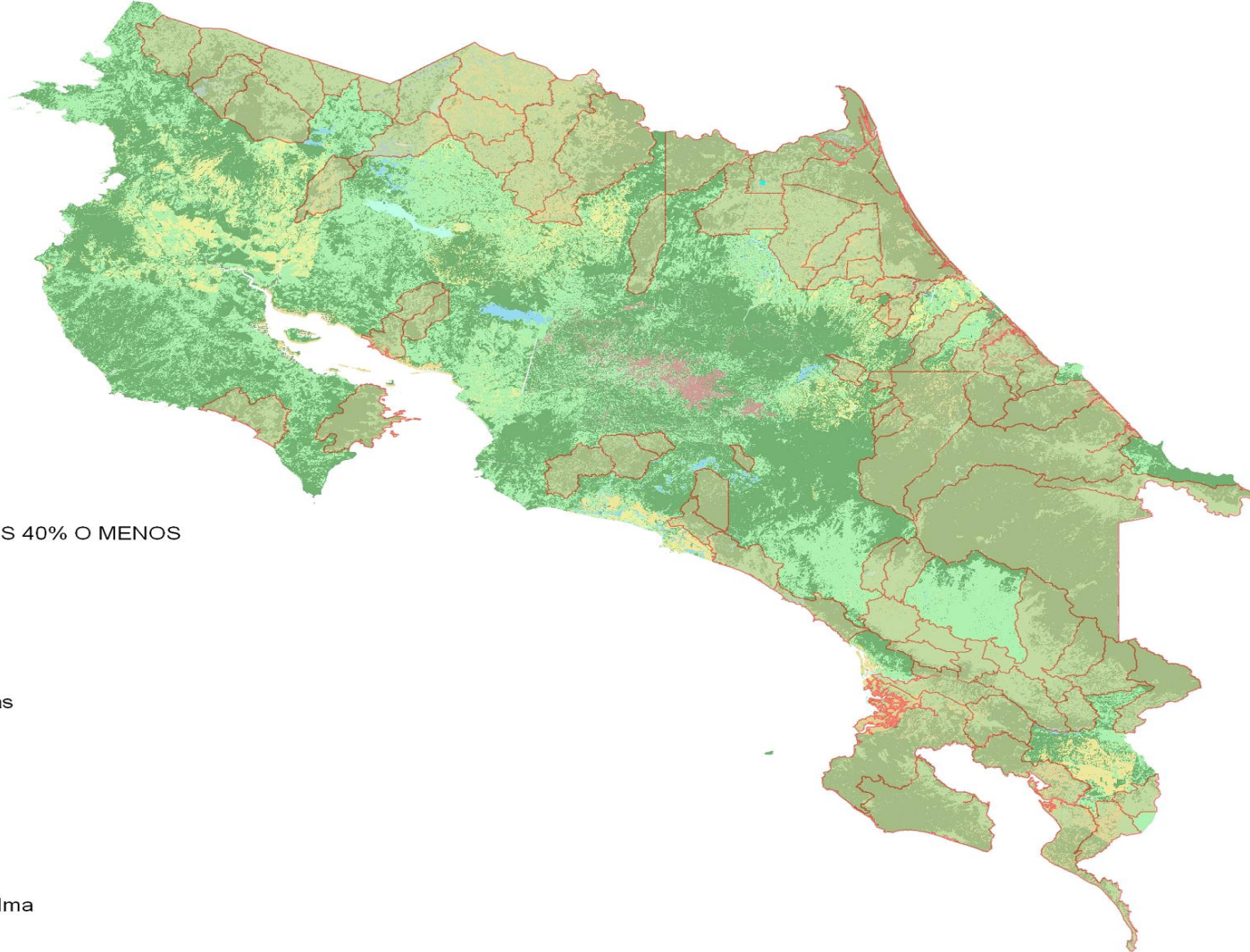
Payments for ecosystem services (synergies between Forests/biodiversity & climate action)

Héctor Arce Benavides
Director REDD+



Relationship between forest and poverty

UBICACION DE LOS DISTRITOS CON INDICE DE DESARROLLO SOCIAL MENOR A 40%



SIMBOLOGIA

 DISTRITOS IDS 40% O MENOS


Cobertura 2010

-  Otros
-  Agricultura
-  Agua
-  Bosque_palmas
-  Forestal
-  Manglar
-  No_forestal
-  Nubes
-  Paramo
-  Plabtacion_Palma
-  Urbano

The Sustainable Development Goals



Costa Rica's strategy

- Forest Incentives during the 90s
 - Development of a robust protected area system
 - Development of PES program
- 

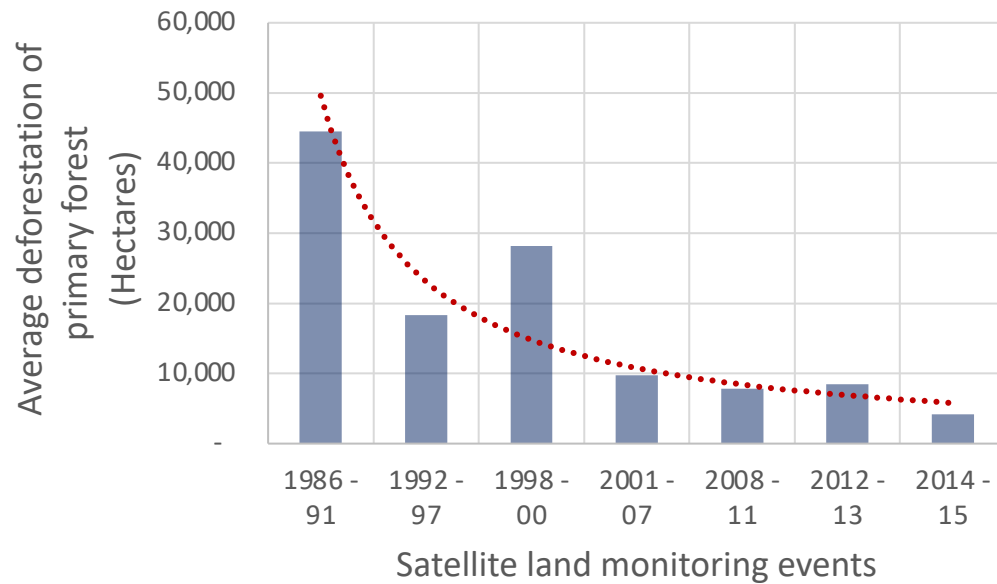
Forest Cover Recovery

- Costa Rica adopted an ambitious carbon neutrality goal under its Nationally Determined Contribution (NDC) to the Paris Agreement and its Decarbonization Plan 2050, showing the country's strong commitment to the global goal to mitigate climate change.
- This target relies on the country's ability to maintain and further expand its PES Program to maintain 60% of its forest cover.

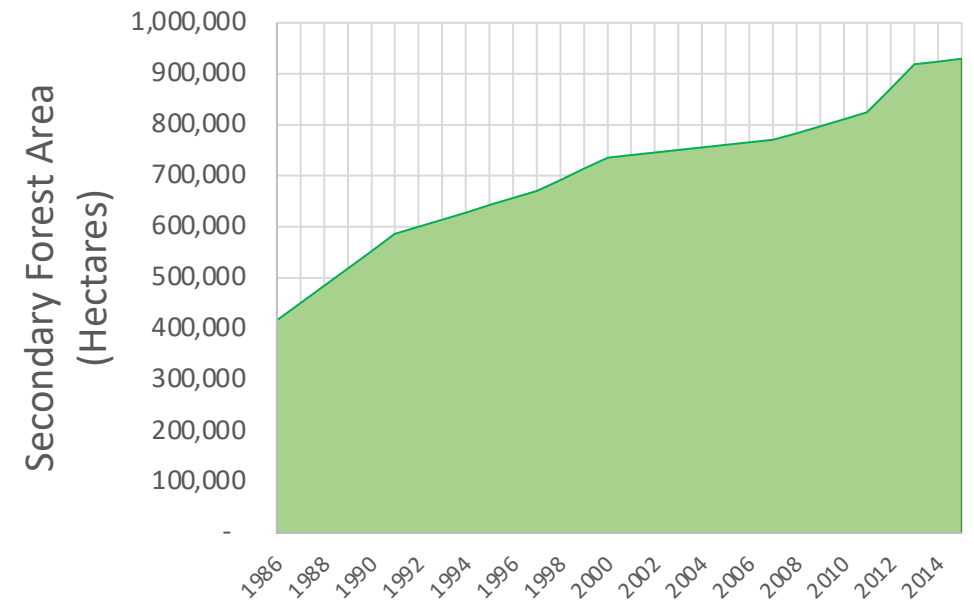


Emission reduction trend (ER) in Costa Rica

Tendencia decreciente de la deforestación promedio del bosque primario observada durante los diferentes eventos de monitoreo satelital terrestre realizados en Costa Rica desde 1986 hasta 2015.



Crecimiento del área de bosque secundario que produce remociones de carbono forestal debido a la mejora de las reservas de carbono, desde 1986 hasta 2015 en Costa Rica.



REDD + Process

Costa Rica has been a pioneer in the REDD+ international process

Two agreements

FCPF US\$ 60

GCF US 54,1

Indigenous People Participation 1997 2018

Reforestación

190,40 has
¢ 58.137.960
\$ 32.640,00

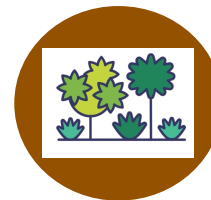


Regeneración Natural

3.986 has
¢ 154.001.739
\$ 382.002,00

Sistemas Agroforestales

1.668.780 árb
¢ 593.983.746
\$ 1.210.119



Protección de Bosques

16.211,0 has
¢ 11.136.720.160
\$ 33.789.408

US\$ 59 millones



RURAL WOMEN'S LOAN

OBJETIVO

Favorecer la democratización económica con el fin de promover el desarrollo económico y el mejoramiento en la calidad de vida de las mujeres rurales.

CONDICIONES DE FINANCIAMIENTO

Plazo hasta 10 años



Hasta ϕ 5.000.000

Garantía fiduciaria



Tasa fija 4%

Forma de pago a la medida



Requisitos sencillos

LINEAS DE FINANCIAMIENTO

Fomento productivo



Capital de trabajo



Infraestructura



Equipo



Proyectos innovadores





Women PES

OBJETIVO

Favorecer la participación de la mujer dentro del Programa de Pago por Servicio Ambiental .

Marco Legal

Modificación del Reglamento a la Ley Forestal,. Decreto Ejecutivo 25721-MINAE y sus reformas, del 17 de octubre de 1996.



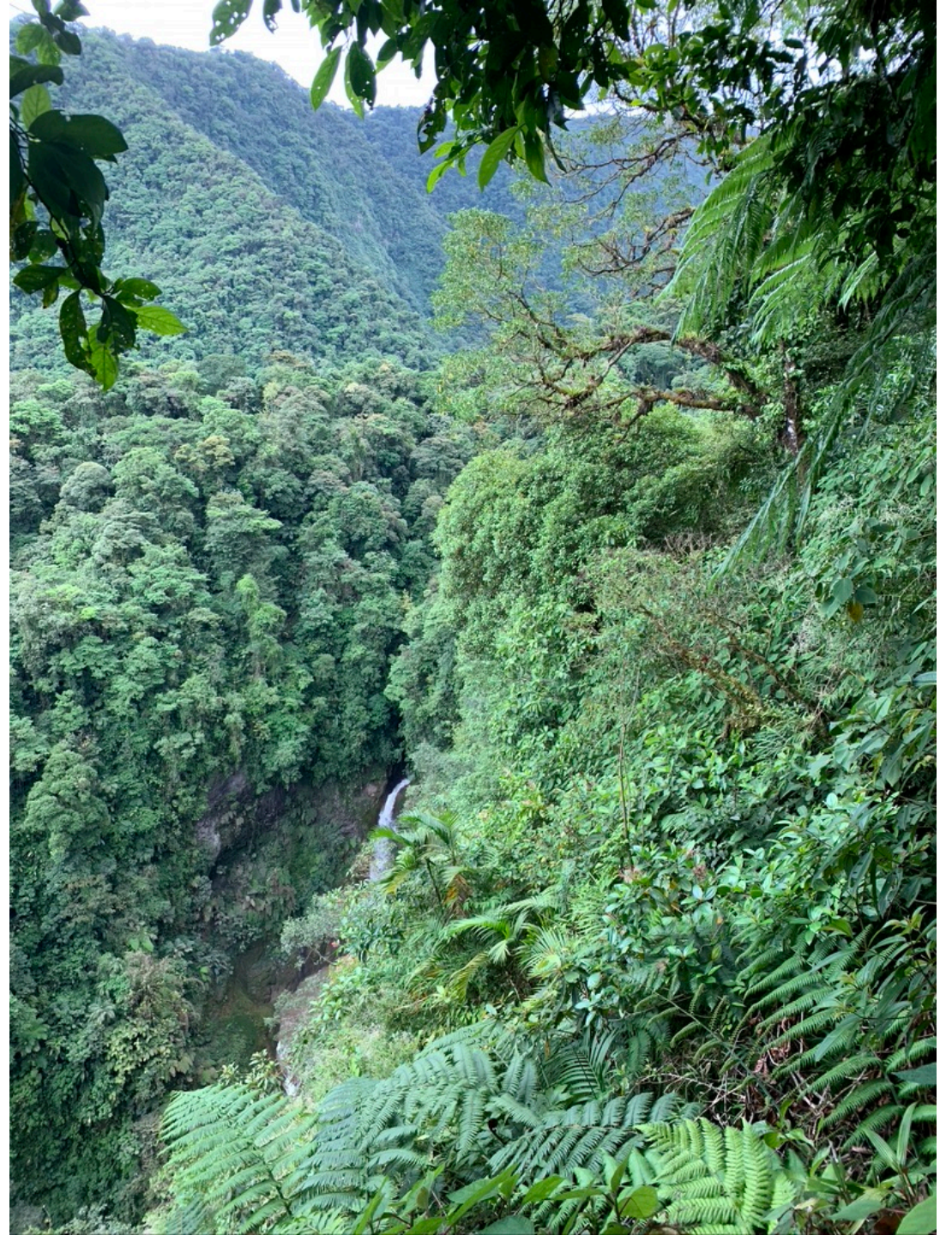
LINEAS DE FINANCIAMIENTO

Inclusión en la matriz de valoración de fincas para la priorización del PSA, el otorgamiento de 25 puntos adicionales para aquellos bosques cuya propietaria o co-propietaria registral sea una mujer.



Challenges

- **Legal limitations of some landholders to join the programs.**
- **Better measure the impact of PES.**
- **Lack adequate accounting to record GDP PES and the importance of the forestry sector in general.**
- **More resources are required to meet all the demand**
- **Incorporate the concept of landscape**



Conclusions

- Although it is true that programs such as REDD+ and PES cannot solve all poverty in rural areas, the lessons learned indicate that they can mitigate it.
- At the same time they contribute to maintaining forest ecosystems and their environmental services.





The picture can't be displayed.



Thank you

harce@fonafifo.go.cr

www.fonafifo.go.cr