


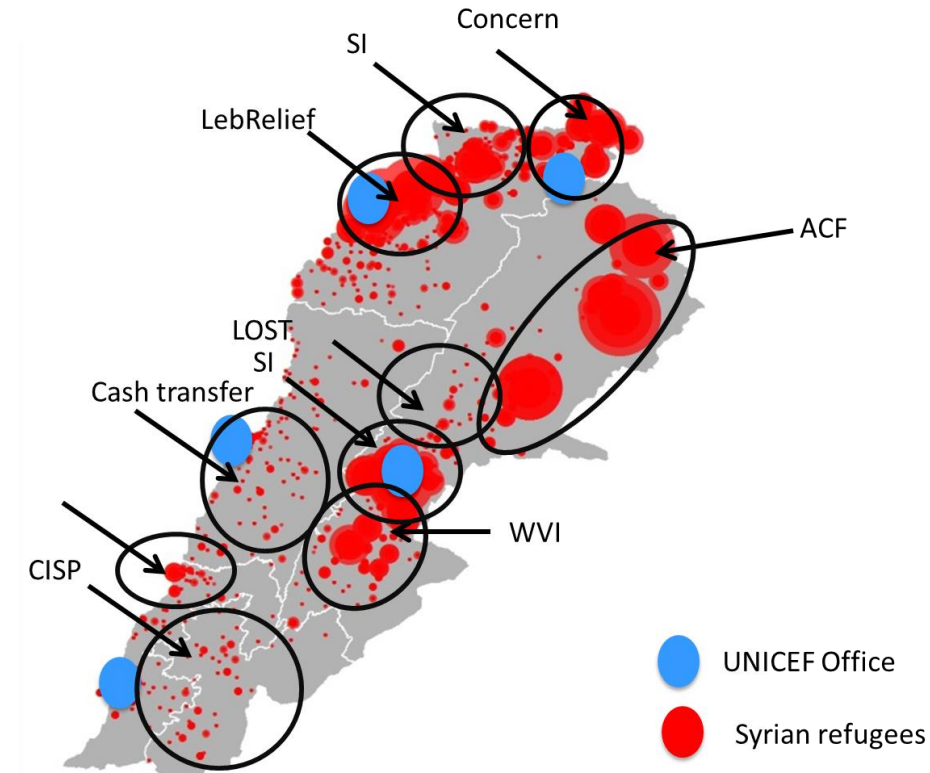
May 2018

UNICEF Lebanon

unicef  | for every child

WASH - Situation

- Winter warmer than usual will lead to harsh summer
- Limited capacity from the Water Establishments to satisfy a growing demand from both the Lebanese and Syrian refugees
- WASH services have been reduced for the most vulnerable populations, the 273,000 Syrian refugees living in Informal Settlements without access to public WASH services
- Reduction of emergency wash services will affect the most vulnerable people (financial, health, social...)



Achievement - Emergency

Activities



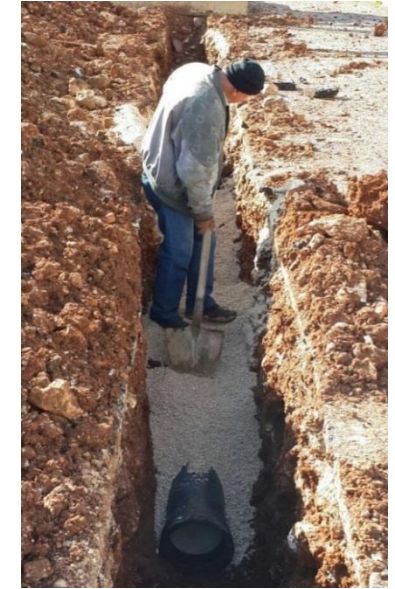
Result: 200 Community mobilizers trained (change behavior)



Result: 185,000 Syrian refugees in ISs served with water services in 2017



Result: 165,000 Syrian refugees in ISs served with wastewater services in 2017



Output



Result: cultural sensitive and gender based and inclusive programming



Result: No waterborne diseases outbreaks



Result: No major environmental and social negative impact.

Achievement - stabilization

Activities



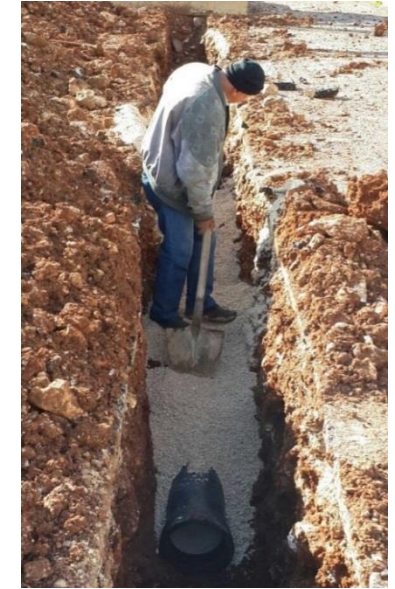
Result: 4 staff embedded in MEW/ WE



Result: 11 projects/ 113,710 beneficiaries



Result: 1 project/ 20,903 beneficiaries



Output



Result: JMP at HH finalized
Starting implementation of communication plan with 3 WEs



Result: 100% of drinking water safe



Result: 8,5% of the WW treated.

4. Way forward

- Ensure the continuity of WASH services in Informal Settlements, while exiting from water trucking and desludging.
- Finalize capacity building of a network of community mobilizers in ISs
- Support the Water Establishments in fixing urgent infrastructure failures and ensuring the water services, while building their capacity.
- Support the MEW in implementing the National Water Sector Strategy prioritizing the most disadvantaged children and their families (WQMIP)

- Reduction of funds for emergency – July 2018
- Long term emergency with temporary infrastructure
- Lack of opportunities for exit strategy
- Increased probability of health risks, eviction, social tension and environmental
- Compromise water quantity vs water quality (irrigation channel)