

# An action-oriented approach to Voluntary Local Reviews

National Capacity Building Workshop on Improved Local and National Government Capacities for Localizing SDGs Through VLRs in Malawi



LOCALIZING  
THE SDGs



# UN-Habitat: mission and work on SDG localization



Urbanization and human settlement matters



Urbanization for reducing inequality, discrimination and poverty



Works in over 90 countries

## UN-Habitat's priorities



**SDG Localization**



**Housing**



**Climate Change**



**Post-conflict recovery**



**Resolution on Localizing the SDGs** adopted by Member States during the second session of the United Nations Habitat Assembly

# Voluntary Local Reviews



**VOLUNTARY  
LOCAL  
REVIEWS**



**Data environment**



**Strategic planning and policy coherence**



**Participation and awareness raising**



**Transparency and accountability**



**Multilevel coordination**



**International positioning and recognition**



**300** VLRS HAVE BEEN PUBLISHED  
SINCE 2016



**198** LOCAL AND REGIONAL  
GOVERNMENTS



**24** VLRS SUPPORTED BY UN-  
HABITAT



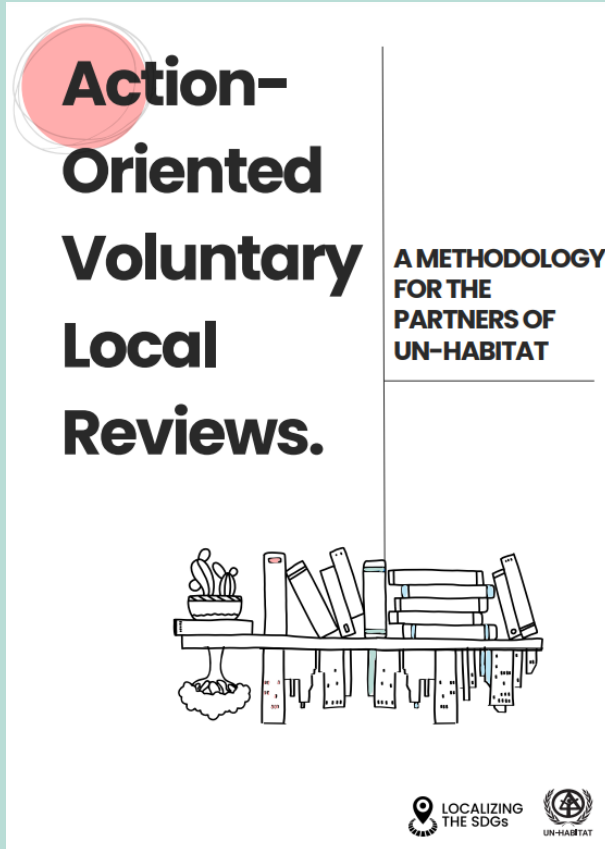
**12** VLRS CURRENTLY BEING  
SUPPORTED BY UN-HABITAT

## Frequent questions

*What is needed to do a VLR?*

*How exactly is a VLR made to be 'action-oriented'?*

*What comes after the VLR?*

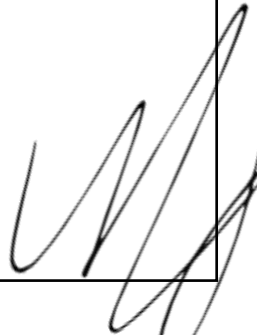


# Action-Oriented Voluntary Local Reviews.

[https://unhabitat.org/sites/default/files/2024/02/action-oriented\\_vlr\\_methodology.pdf](https://unhabitat.org/sites/default/files/2024/02/action-oriented_vlr_methodology.pdf)



**Voluntary Local Review is an  
assessment of a territory's progress  
towards the Sustainable  
Development Goals, accompanied  
by strategic plans to enhance future  
progress.**

A handwritten signature in black ink, located in the bottom right corner of the page. The signature is stylized and appears to be a set of initials or a name.

Global and Regional VLR Guidelines

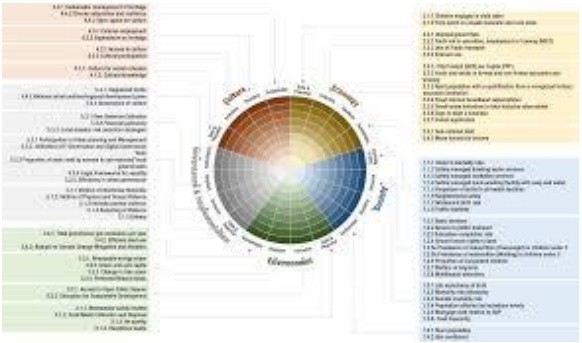


**Voluntary Local Review is an assessment of a territory's progress towards the Sustainable Development Goals, accompanied by strategic plans to enhance future progress.**

SDG Indicators, national and local indicators

|     |     |     |     |     |     |     |      |     |      |      |      |      |      |      |       |       |       |
|-----|-----|-----|-----|-----|-----|-----|------|-----|------|------|------|------|------|------|-------|-------|-------|
| 1.1 | 2.1 | 3.1 | 4.1 | 5.1 | 6.1 | 7.1 | 8.1  | 9.1 | 10.1 | 11.1 | 12.1 | 13.1 | 14.1 | 15.1 | 16.1  | 17.1  | 17.11 |
| 1.2 | 2.2 | 3.2 | 4.2 | 5.2 | 6.2 | 7.2 | 8.2  | 9.2 | 10.2 | 11.2 | 12.2 | 13.2 | 14.2 | 15.2 | 16.2  | 17.2  | 17.12 |
| 1.3 | 2.3 | 3.3 | 4.3 | 5.3 | 6.3 | 7.3 | 8.3  | 9.3 | 10.3 | 11.3 | 12.3 | 13.3 | 14.3 | 15.3 | 16.3  | 17.3  | 17.13 |
| 1.4 | 2.4 | 3.4 | 4.4 | 5.4 | 6.4 | 7.a | 8.4  | 9.4 | 10.4 | 11.4 | 12.4 | 13.a | 14.4 | 15.4 | 16.4  | 17.4  | 17.14 |
| 1.5 | 2.5 | 3.5 | 4.5 | 5.5 | 6.5 | 7.b | 8.5  | 9.5 | 10.5 | 11.5 | 12.5 | 13.b | 14.5 | 15.5 | 16.5  | 17.5  | 17.15 |
| 1.a | 2.a | 3.6 | 4.6 | 5.6 | 6.6 |     | 8.6  | 9.a | 10.6 | 11.6 | 12.6 |      | 14.6 | 15.6 | 16.6  | 17.6  | 17.16 |
| 1.b | 2.b | 3.7 | 4.7 | 5.a | 6.a |     | 8.7  | 9.b | 10.7 | 11.7 | 12.7 |      | 14.7 | 15.7 | 16.7  | 17.7  | 17.17 |
|     | 2.c | 3.8 | 4.a | 5.b | 6.b |     | 8.8  | 9.c | 10.a | 11.a | 12.8 |      | 14.a | 15.8 | 16.8  | 17.8  | 17.18 |
|     |     | 3.9 | 4.b | 5.c |     |     | 8.9  |     | 10.b | 11.b | 12.a |      | 14.b | 15.9 | 16.9  | 17.9  | 17.19 |
|     |     | 3.a | 4.c |     |     |     | 8.10 |     | 10.c | 11.c | 12.b |      | 14.c | 15.a | 16.10 | 17.10 |       |
|     |     | 3.b |     |     |     |     | 8.a  |     |      |      | 12.c |      | 15.b | 16.a |       |       |       |
|     |     | 3.c |     |     |     |     |      |     |      |      |      |      | 15.c | 16.b |       |       |       |
|     |     | 3.d |     |     |     |     | 8.b  |     |      |      |      |      |      |      |       |       |       |

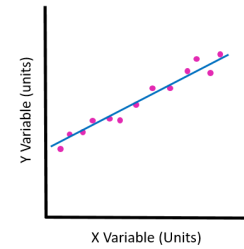
Global Urban Monitoring Framework



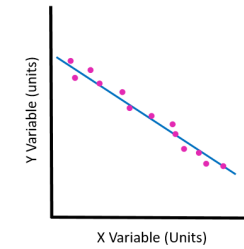
*[Handwritten signature]*

**Voluntary Local Review is an assessment of a territory's progress towards the Sustainable Development Goals, accompanied by strategic plans to enhance future progress.**

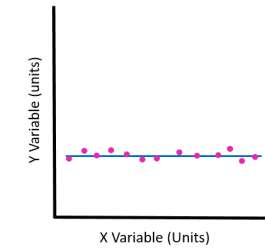
*Trends over time*



Positive trend



Negative trend



No trend

*What are the local priorities?*

*What is needed to achieve them?*

A handwritten signature in black ink, consisting of several loops and a long horizontal stroke at the end.

**Voluntary Local Review is an assessment of a territory's progress towards the Sustainable Development Goals, accompanied by strategic plans to enhance future progress**

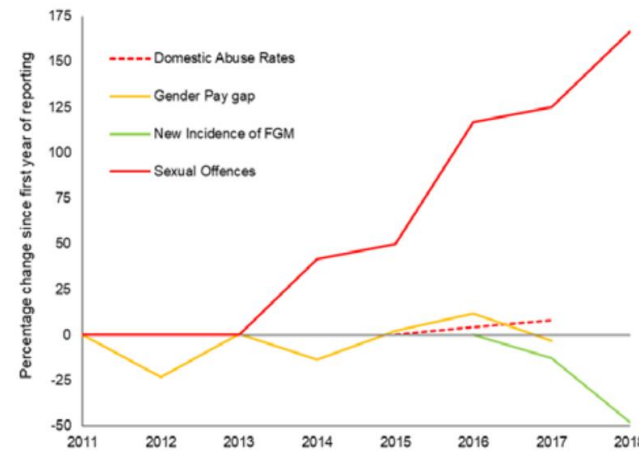
Connected to initiatives, projects, policies



Problem solving



Evidence based



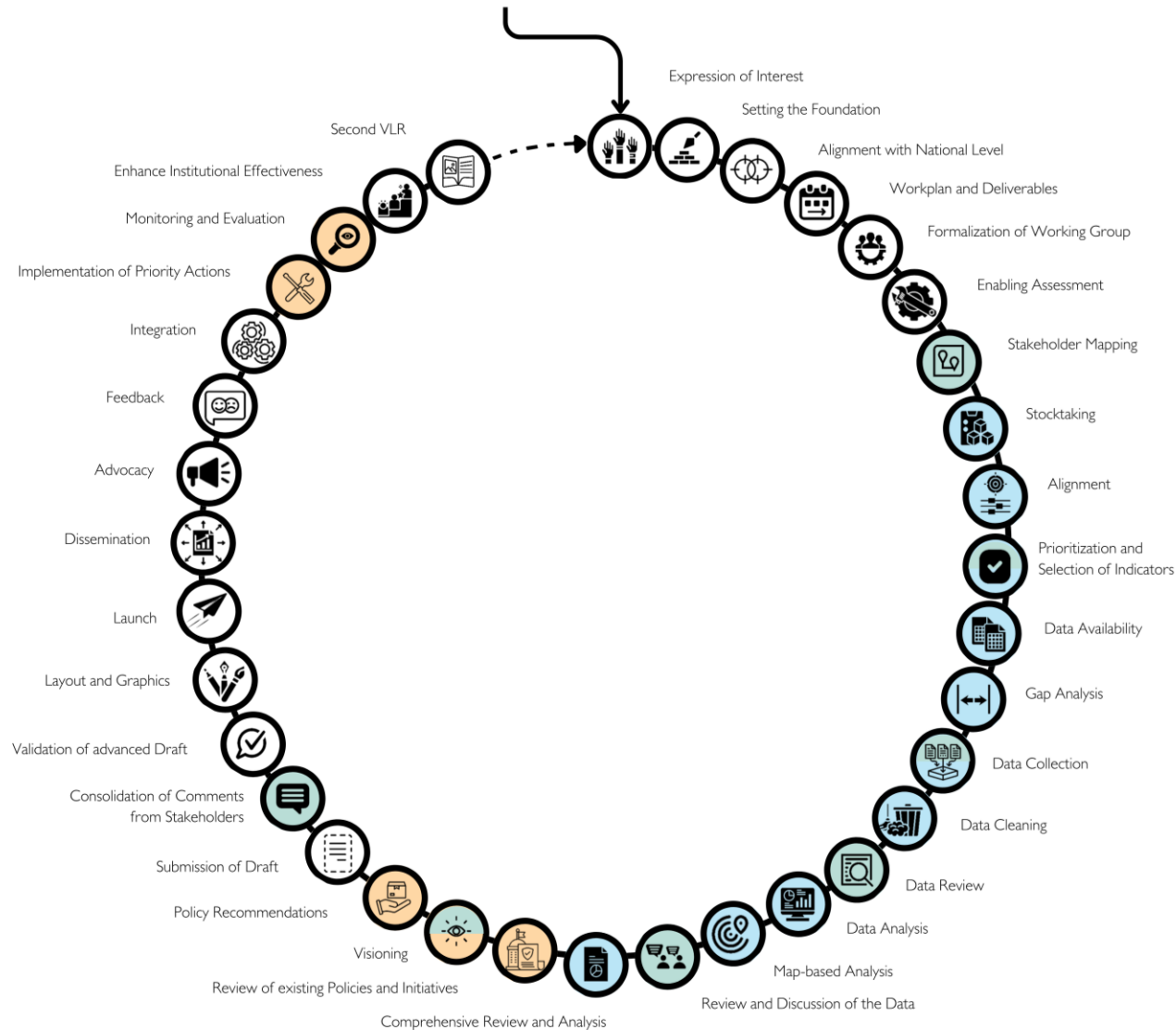
A handwritten signature or scribble in the bottom right corner of the page.



# Work Steps



# Work Steps



## DATA TRACK

The third phase dives into the review of the data and how to build upon the evidence with strategic next steps. It includes an analysis of existing policies and initiatives that have contributed to the current status in a given territory and subsequent suggestion for what to keep, strengthen, improve, or abolish.

Typically be drawn

**TRACKS**

- STRATEGIC ACTION TRACK
- STAKEHOLDER ENGAGEMENT TRACK
- DATA TRACK

## STAKEHOLDER ENGAGEMENT TRACK

### STRATEGIC ACTION TRACK

The Strategic Action Track spans across three VLR Phases: Review and Strategy; Finalization; and Beyond the VLR. It is critical for building upon the collected data with strategic, and actionable next steps. This includes the development of action-oriented recommendations and a vision with strategic objectives. All items are developed in close consideration of existing projects and/or policies, and the inputs from stakeholders.

**TRACKS**

- STRATEGIC ACTION TRACK
- STAKEHOLDER ENGAGEMENT TRACK
- DATA TRACK

| STATS   | OUTPUTS   |
|---|---|
| <p><b>SUGGESTED TIME</b></p> <p>5+ months</p>   | <p><b>MATERIALS NEEDED</b></p> <p>Current local, national, and/or strategic plans</p>   |
| <p><b>LEAD ACTORS</b></p> <p>Drafting Officer and Stakeholder Engagement Officer, in collaboration with the implementing government departments</p> | <p><b>TOOL</b></p> <p>The Action-oriented Recommendation Tool supports steps 3-6 of the Strategic Action Track and produces a comprehensive table of a policy recommendations with specific actions sorted by SDGs. Each action is assigned a proposed action-taker(s), funding source, timeline, and priority. Additionally, connections to existing plans are highlighted to strengthen policy coherence.</p> |

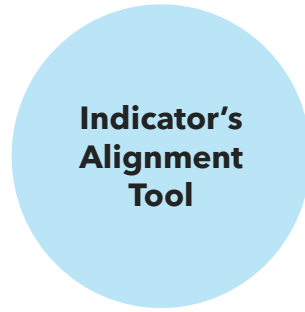
**ADDITIONAL RESOURCES**

- [The SDG Actions Platform](#)
- [SDG Good Practices \(First and Second Edition\)](#)
- [UN-Habitat's Evaluation Manual](#)
- [UNDAF Companion Guide: Theory of Change](#)
- [Act for Our Common Future](#)

# Tools



**Data**



**Stakeholder Engagement**



**Action-Oriented Recommendations**

**Action-Oriented Recommendations Table**

| SDG        | SDG Target | Links to existing plan(s)  | Aim                                   | Action(s)  | Evidence  | Proposed Implementing Partner(s) | Proposed Timeline  | Proposed Funding Source  | Priority  | Proposed Monitoring Mechanism   |
|------------|------------|--|---------------------------------------|--|---|----------------------------------|--|--|---|---|
| e.g. SDG 4 | e.g. 4.1   | e.g. "City Development Plan" Section 3.2 highlights need to improve education sector | e.g. Improvement of Education Quality | e.g. Implement continuous professional development programs for teachers (e.g. workshops, and training sessions on modern teaching methodologies, subject expertise, classroom management, and understanding diverse learning needs) | e.g. several cities in Finland have improved their education quality, by heavily emphasizing teacher training and support [source]. | e.g. Department for Education    | e.g. Development Programmes to be developed by X; First teachers in training by Y. | e.g. Lobby for support from national government to secure additional funding earmarked for educational development at the local level. | e.g. 2 (if 1=most important and 3=less important) | e.g. Student Performance Assessments; Teacher Feedback and Surveys; Graduation Rates and Dropout Rates. To be carried out and collected from Z. |

# ZOOMING IN ON THE STRATEGIC ACTION TRACK

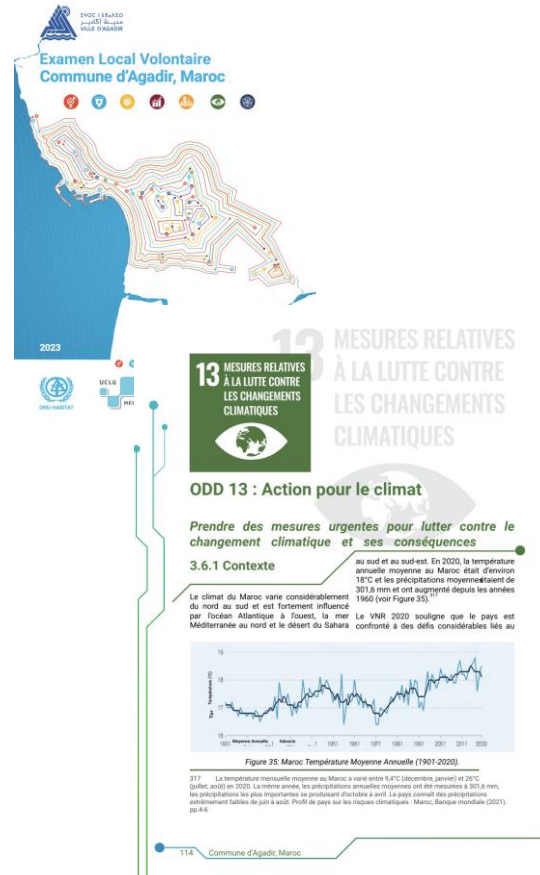
## Strategic Recommendations

## Review of Existing Policies and Initiatives

## Visioning and Prioritization

## Implementation

## Continued Monitoring and Evaluation



### Récapitulatif des projets et leurs lien avec les ODD

| N° | Projet   | ODD |
|----|--|-----|
| 1  | Elaboration d'une charte architecturale et paysagère communale.  | 11  |
| 2  | La création d'une structure d'assistance technique locale à l'auto-construction.   | 11  |
| 3  | Aménagement et animation communautaire assistés par la commune et les associations locales des espaces publics.  | 11  |
| 4  | Création d'une trame de mobilité douce articulant les quartiers de la commune à la route nationale.  | 11  |
| 5  | Mise en place d'une boucle de transport spécifique pour les personnes à mobilité réduite.  | 11  |
| 6  | Mise en place d'un programme de sensibilisation à la sécurité routière orientée vers les cyclistes et motocyclistes.   | 11  |
| 7  | Projet de restructuration urbaine pour l'ensemble de la commune.   | 11  |
| 8  | Constitution de réserves foncières publiques dans les zones d'extension.   | 11  |
| 9  | Opérations foncières publiques orientées vers les couches sociales les plus défavorisées.  | 11  |
| 10 | Etude de vulnérabilité à l'échelle communale.  | 11  |
| 11 | La mise en place de comités locaux de gestion des risques.   | 11  |
| 12 | La cartographie, le bornage physique et l'aménagement des zones inondables et du domaine public hydraulique.   | 11  |
| 13 | Création d'une décharge contrôlée intercommunale.  | 11  |
| 14 | Généralisation de la collecte des ordures ménagères sur l'ensemble du territoire de la commune.  | 11  |
| 15 | Entreprendre un programme communal de végétalisation de l'espace public pour créer un réseau communal d'îlots de fraîcheur.  | 11  |
| 16 | Création d'une pépinière pédagogique intercommunale.   | 11  |
| 17 | Valorisation et promotion de l'agriculture périurbaine.  | 11  |
| 18 | Aménagement et valorisation d'un corridor écologique le long du cours d'eau traversant la ville.   | 11  |
| 19 | Généralisation de l'éclairage public à forte efficacité énergétique à l'ensemble des voies de la commune.  | 11  |
| 20 | Recensement et traitement de l'ensemble des obstacles qui entravent le déplacement des personnes à besoins spécifiques dans les espaces et équipements publics.                                    | 11  |
| 21 | Aménagement participatif et inclusif des espaces verts privés dans le plan d'aménagement urbain.   | 11  |
| 22 | Mise en place d'une cellule dédiée de gestion et de programmation de l'occupation et de l'animation communautaire, commerciale, culturelle, sportive et culturelle de l'espace public.             | 11  |
| 23 | Renforcer les capacités techniques financières et techniques de la commune.  | 11  |
| 24 | Renforcer les compétences et les moyens de l'ODCO.   | 11  |
| 25 | Création d'une pépinière d'entreprises.  | 11  |
| 26 | Création d'une zone de petits métiers urbains.   | 11  |
| 27 | Création d'un espace de formation, d'exposition et de production pour promouvoir le savoir-faire artisanal des femmes au foyer.  | 11  |
| 28 | Accompagner les initiatives associatives ou communautaires dans l'économie circulaire et solidaire.  | 11  |
| 29 | Organiser des filières courtes et créer de points de vente du producteur au consommateur proposant des produits locaux.  | 11  |
| 30 | Création d'une banque alimentaire locale qui redistribue la nourriture non destinée à la vente (excédents et dons) aux ménages les plus vulnérables de la commune.                                 | 11  |
| 31 | Création d'un centre d'accueil des femmes victimes de violences conjugales et familiales.  | 11  |
| 32 | Proposer une offre alternative de médecine de jour ambulatoire en faveur des personnes âgées et des personnes à mobilité réduite.  | 11  |
| 33 | Organiser dans l'espace public des sessions de sensibilisation et de vulgarisation concernant la prévention des maladies transmissibles et des conduites à risque.                                 | 11  |
| 34 | Implanter des crèches communales dans les quartiers.   | 11  |
| 35 | Intégrer des clubs de formation à l'artisanat et aux métiers urbains au sein des écoles.   | 11  |
| 36 | Développer une offre de formation professionnelle en phase avec les besoins réels du territoire.   | 11  |
| 37 | Organisation de sessions d'alphabétisation orientée aux personnes âgées dans les équipements de proximité.   | 11  |
| 38 | Création d'un centre d'accueil des femmes victimes de violences conjugales et familiales.  | 11  |
| 39 | Programme de formation des acteurs locaux pour déceler les comportements discriminatoires ou violents et pour identifier les femmes victimes de discrimination ou de violence.                     | 11  |
| 40 | Production d'un guide à destination des femmes et des acteurs locaux exposant clairement et sans ambiguïté les procédures à entamer en cas de violence ou de discrimination observée ou subie.     | 11  |
| 41 | Le lancement d'un programme communal de végétalisation de l'espace public.   | 11  |
| 42 | Etablissement d'un bilan énergétique de l'ensemble des bâtiments, équipements et matériel roulant communaux et la mise en place d'une stratégie communale d'économie et de transition énergétique. | 11  |
| 43 | La production et la diffusion d'un guide local des bonnes pratiques énergétiques.  | 11  |
| 44 | Engager les moyens nécessaires à l'échelle nationale et internationale pour restaurer les écosystèmes des 2 parcs nationaux.   | 11  |
| 45 |  | 11  |

# Global Community

Advocacy and political engagement



REGIONAL FORUMS  
SUSTAINABLE DEVELOPMENT GOALS



HIGH-LEVEL POLITICAL FORUM  
ON SUSTAINABLE DEVELOPMENT



## Networks



**LOCAL2030**  
COALITION  
LOCALIZING THE SDGS

Local2030 Knowledge and Scientific Network

# Global Community





[www.sdglocalization.org](http://www.sdglocalization.org)

# Thank you!

Claudia Garcia Zaragoza  
[claudia.garciazaragoza@un.org](mailto:claudia.garciazaragoza@un.org)



@SDGlocalization



@UN-Habitat SDG  
Localization



@SDGlocalization